



CORCORAN



# Corcoran Virtual Machines



## What are virtual machines and why are they useful?

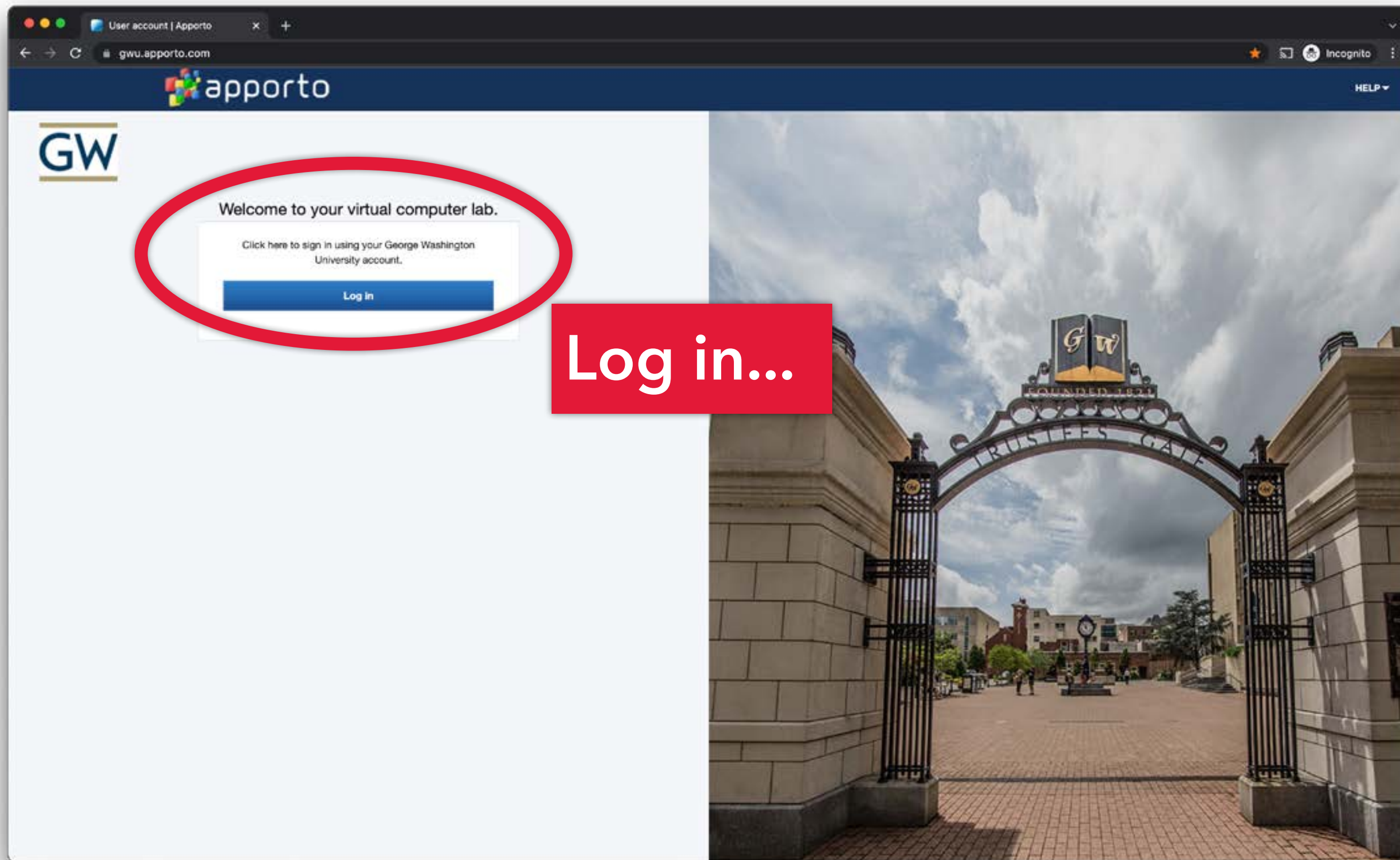
A 'virtual machine' is essentially another computer that you can log into remotely—all you need is an internet connection and a device with a browser [Chrome recommended.] So for example, a VM can be handy if you need to create an architectural rendering or complex motion graphic that requires a powerful GPU, but you only have a modest laptop.

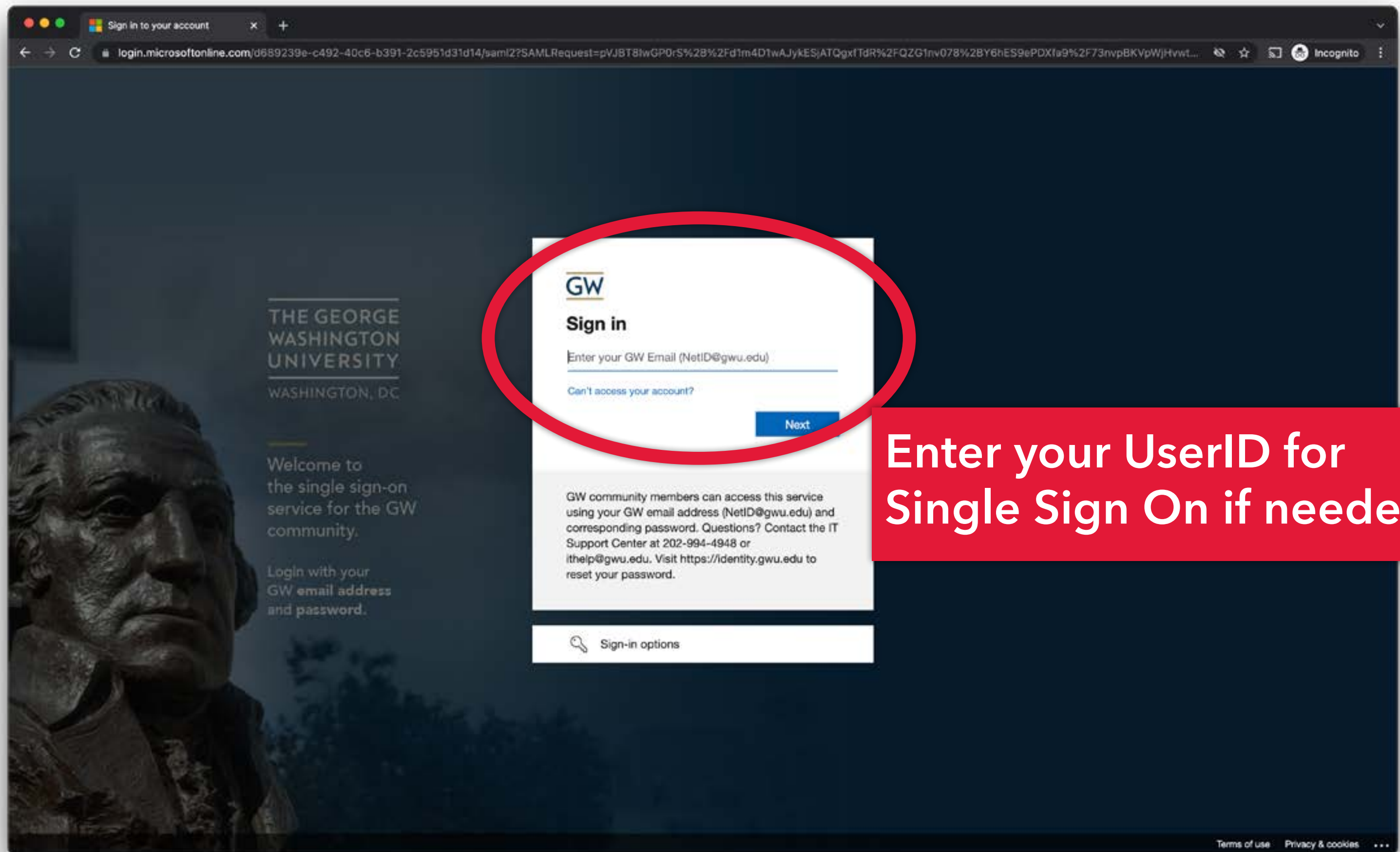
**ALL students enrolled Corcoran classes** now have access to virtual machines. The VMs have most (but not all) of the software found in the Corcoran labs.

**CAVEAT: we have 25 concurrent machines; just like 'real' labs, if all the machines are in use, you will have to wait for the next free machine.**

To access the VMs, go to:

<https://gwu.apporto.com/>





Enter your UserID for  
Single Sign On if needed.





Browser tabs: Inbox - sptwst@... x The George Washin... x F21 Software check... x F22 Software list... x NFTs: crypto grif... x USE TEXTURES IN... x INTRODUCTION TO... x Virtual Computer L... x App Store | Apporto x

Address bar: gwu.apporto.com

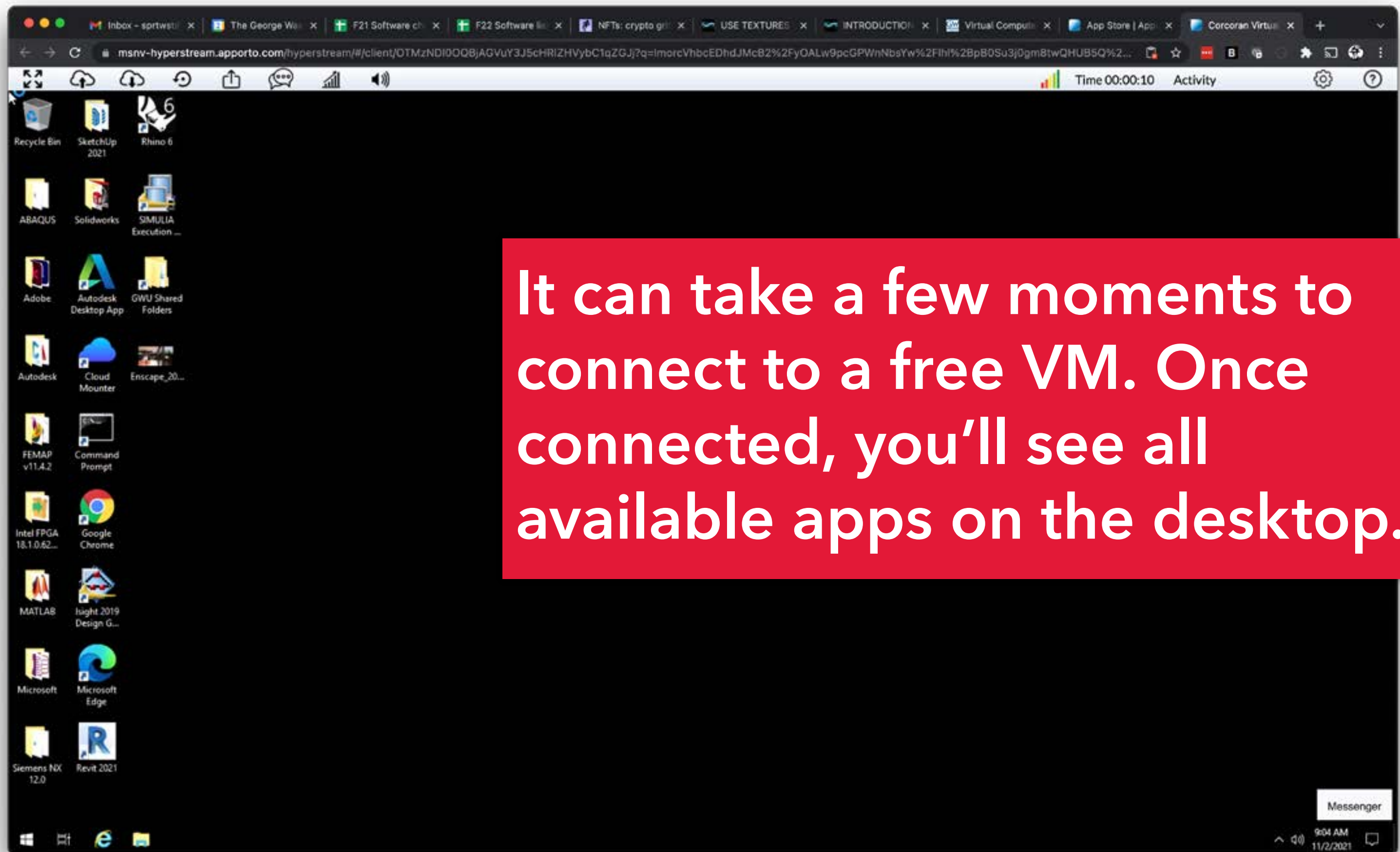
Header: apporto SPRTWST@GWU.EDU HELP

Left sidebar: GW

APP STORE

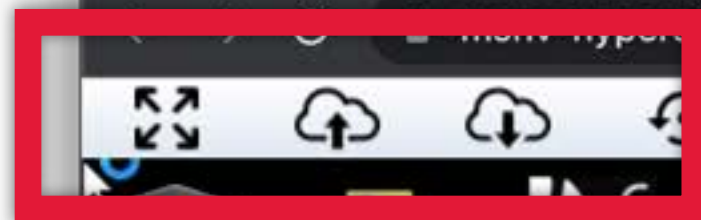
 Corcoran Virtua... Apporto Streamed App <a href="#">Launch</a>	 GW Desktop Apporto Streamed App <a href="#">Launch</a>	 SEAS CAD Lab Apporto Streamed App <a href="#">Launch</a>
 SEAS ECE Lab Apporto Streamed App <a href="#">Launch</a>		

Once you are logged in,  
click 'Launch' under Corcoran  
Virtual Student Lounge.

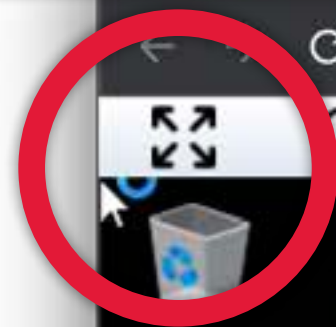


It can take a few moments to connect to a free VM. Once connected, you'll see all available apps on the desktop.

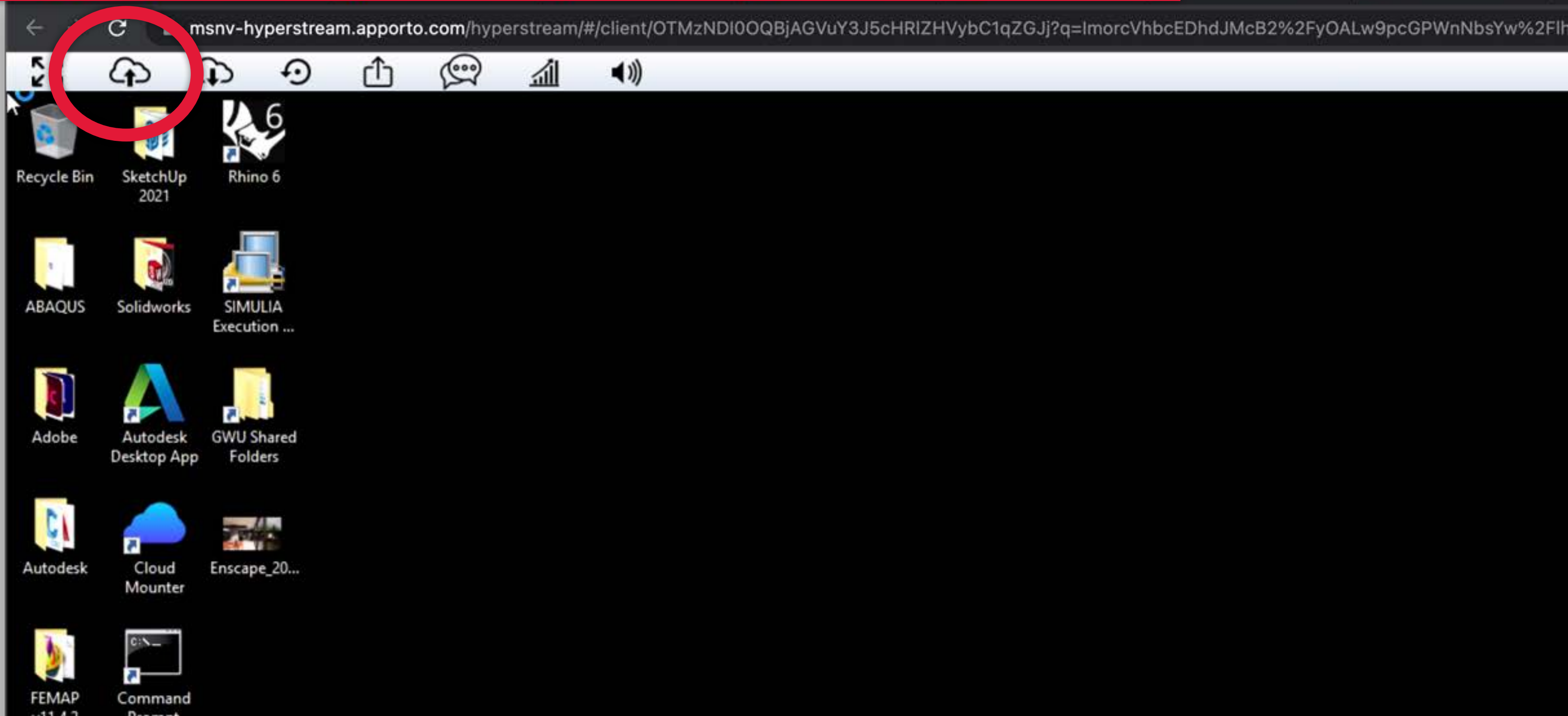
Note the icons in the upper left corner, in particular the first three...



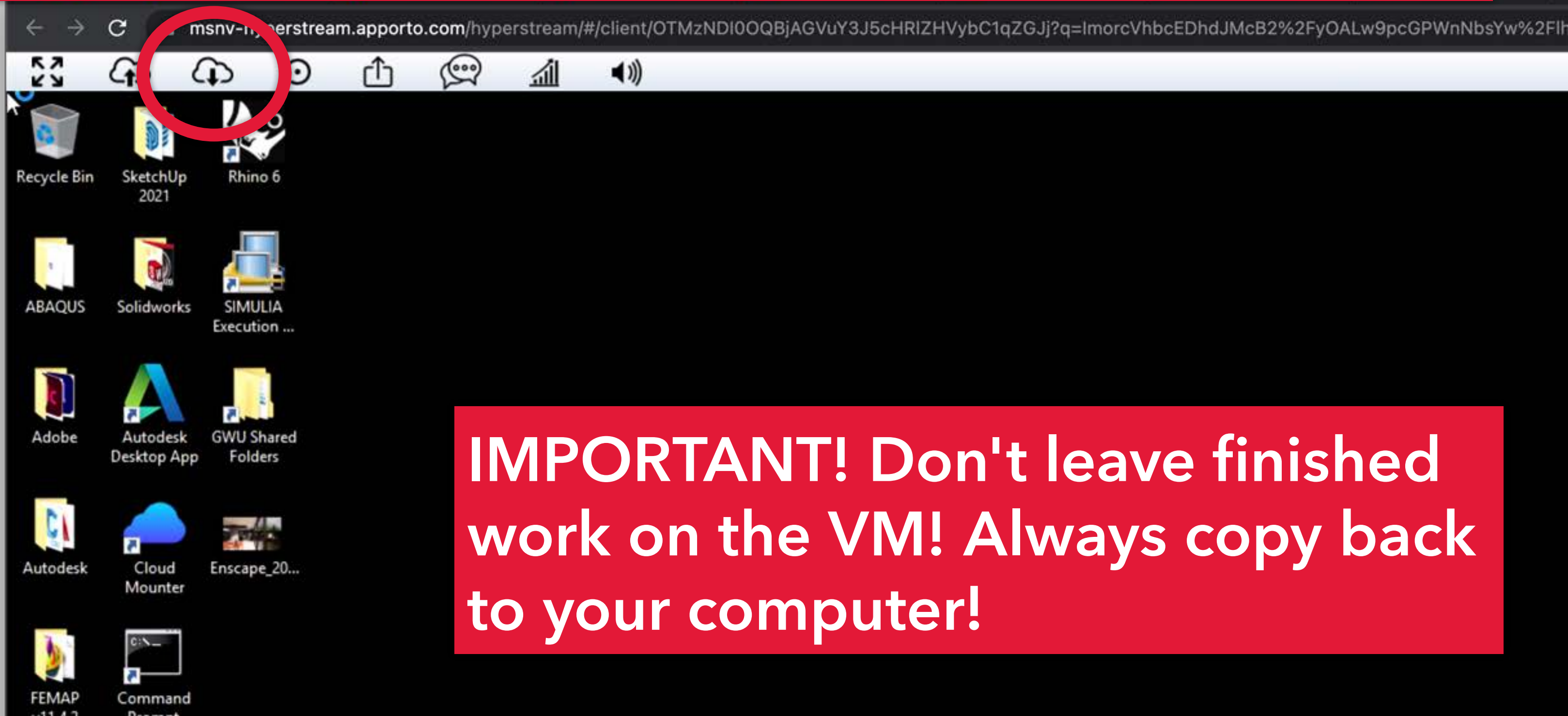
Expands the browser window to full screen mode. (ESC to jump back out.)



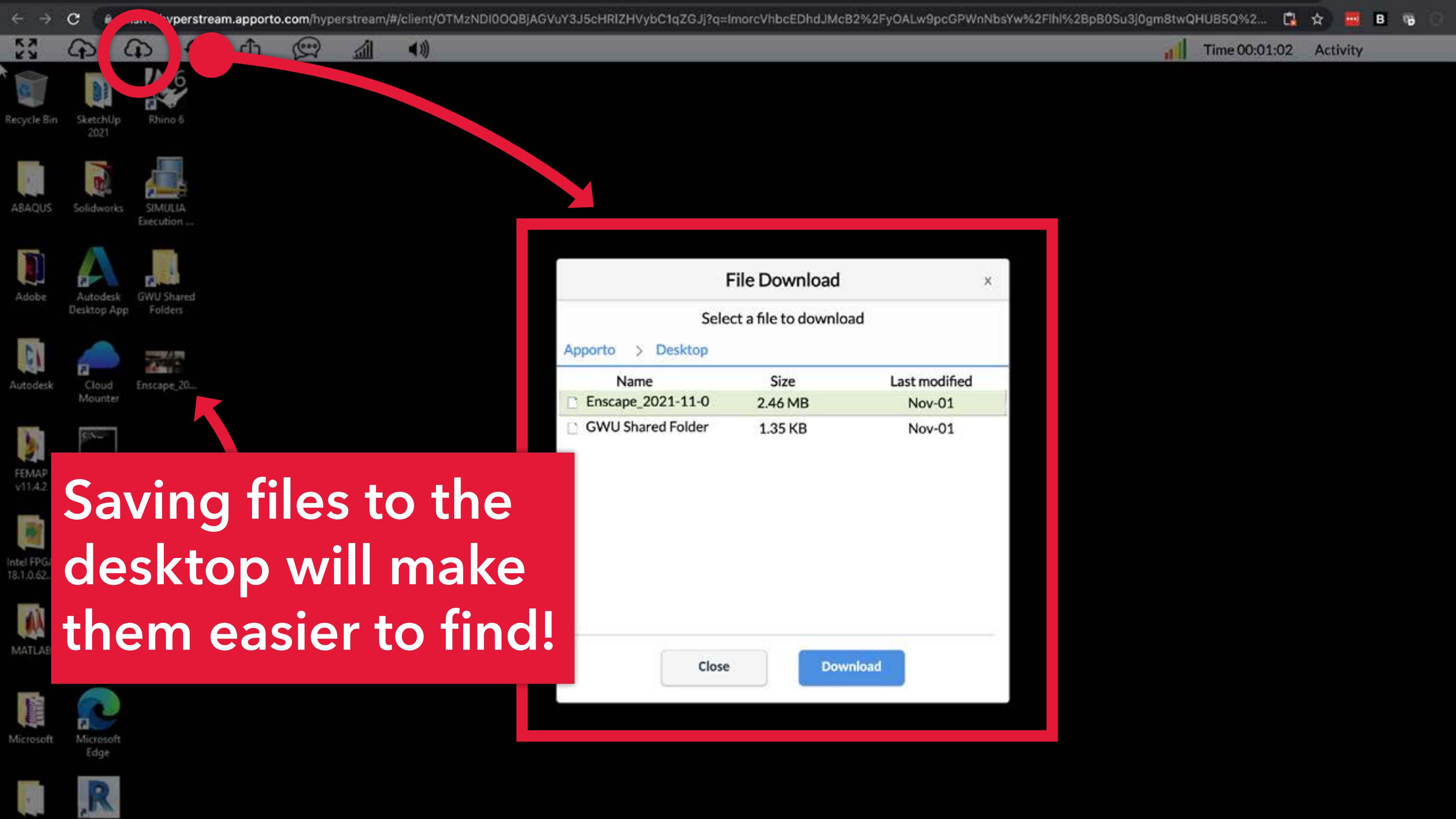
Opens an 'upload' dialog so you can copy files from your computer to the VM.



Opens an 'download' dialog so you can copy files (finished work) from the VM back to your computer.



**IMPORTANT!** Don't leave finished work on the VM! Always copy back to your computer!



Saving files to the  
desktop will make  
them easier to find!

File Download

Select a file to download

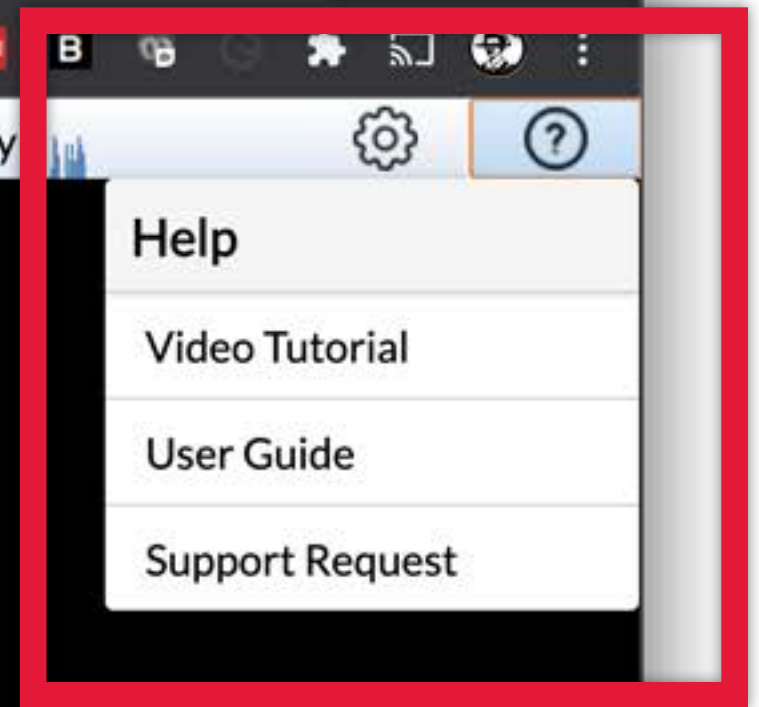
Apporto > Desktop

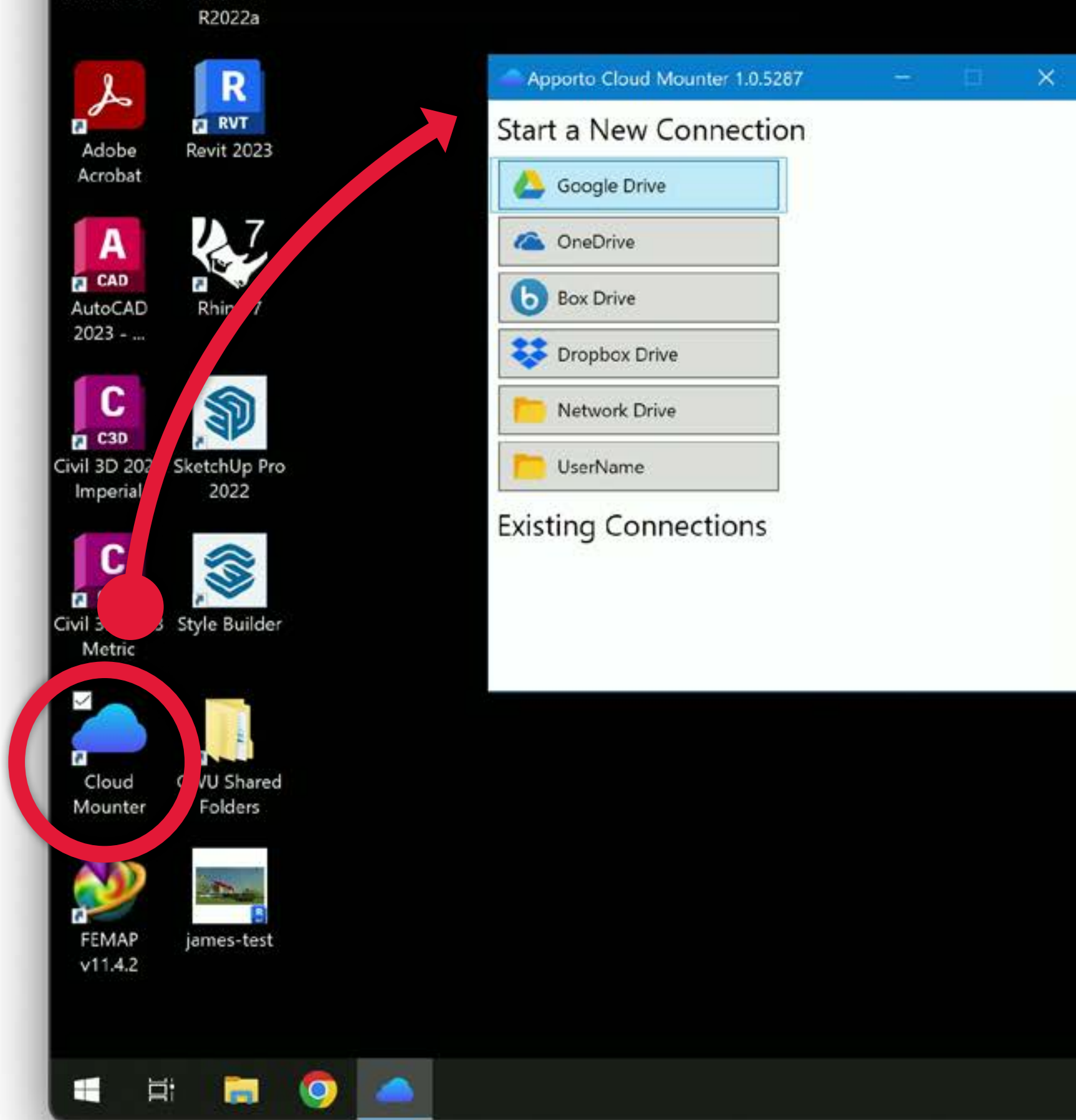
Name	Size	Last modified
<input checked="" type="checkbox"/> Enscape_2021-11-0	2.46 MB	Nov-01
<input type="checkbox"/> GWU Shared Folder	1.35 KB	Nov-01

Close

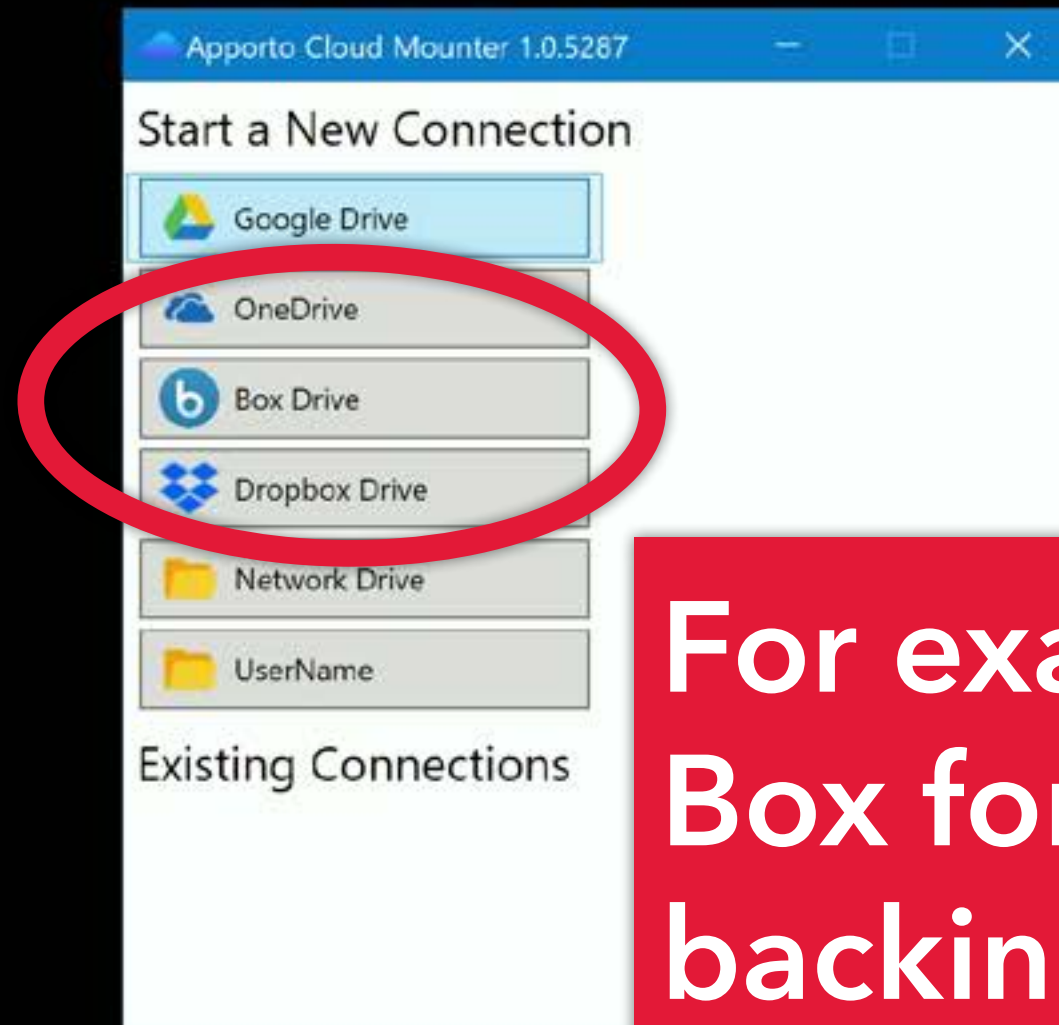
Download

Additional help in  
the upper-right.

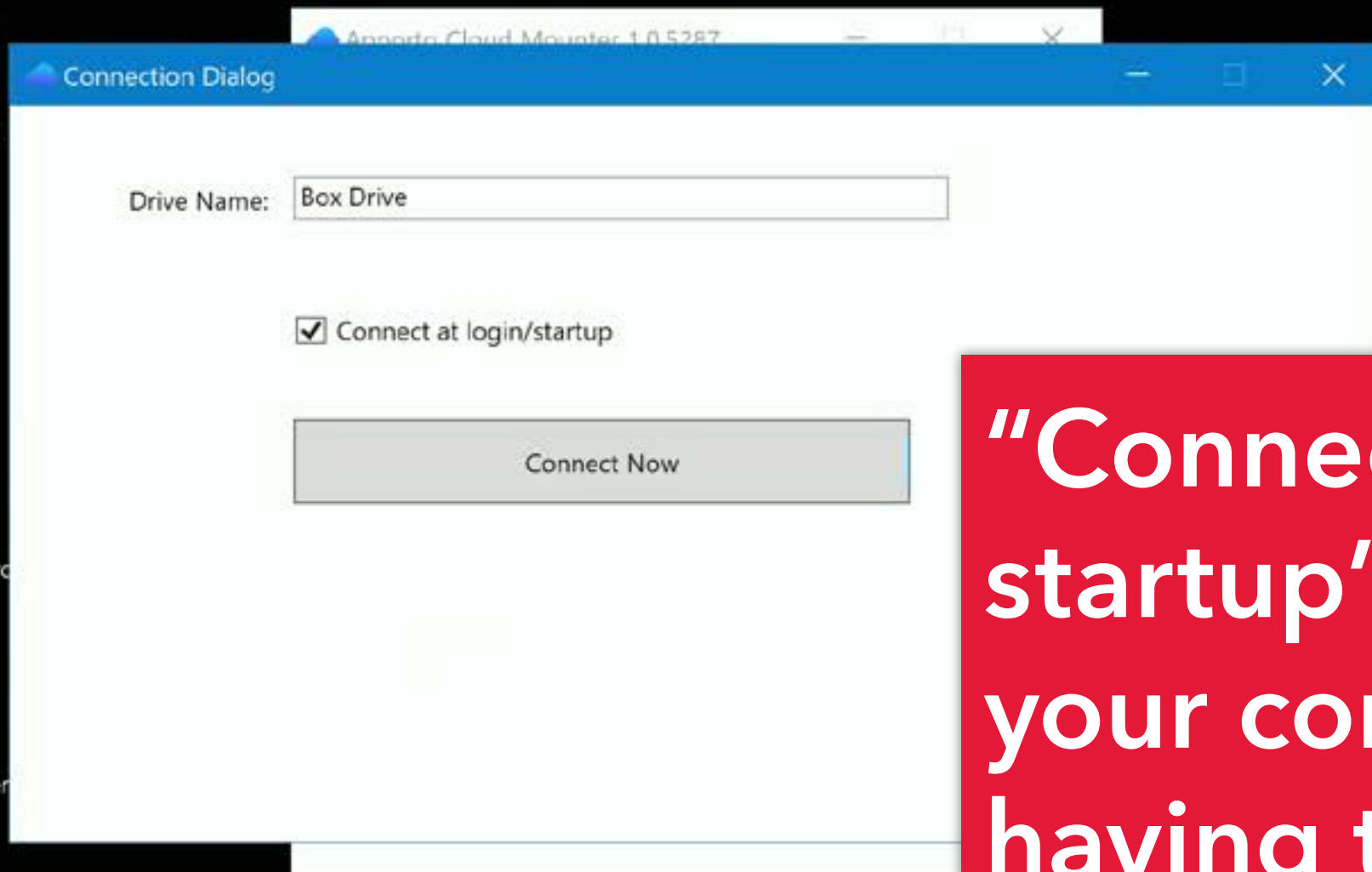




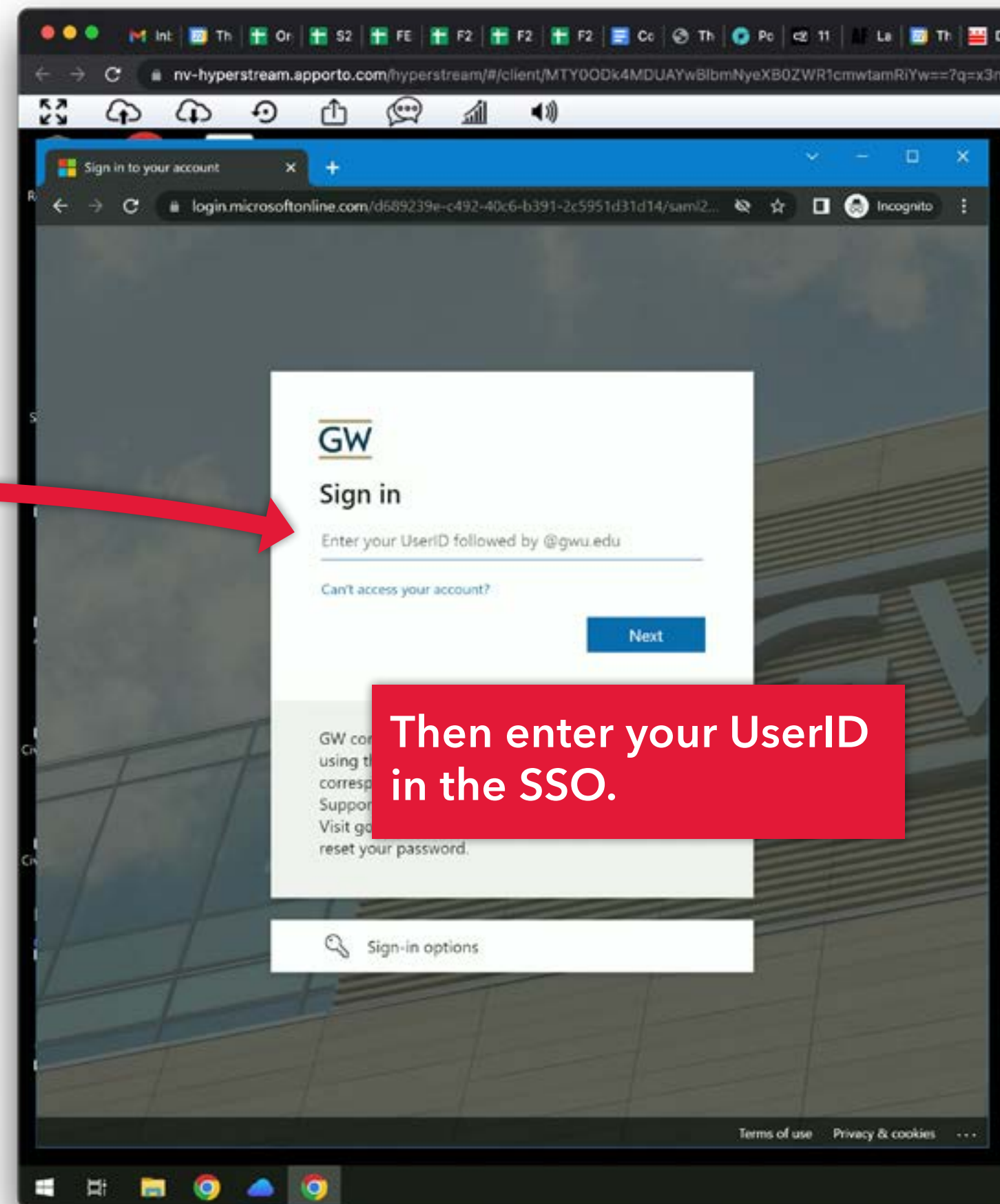
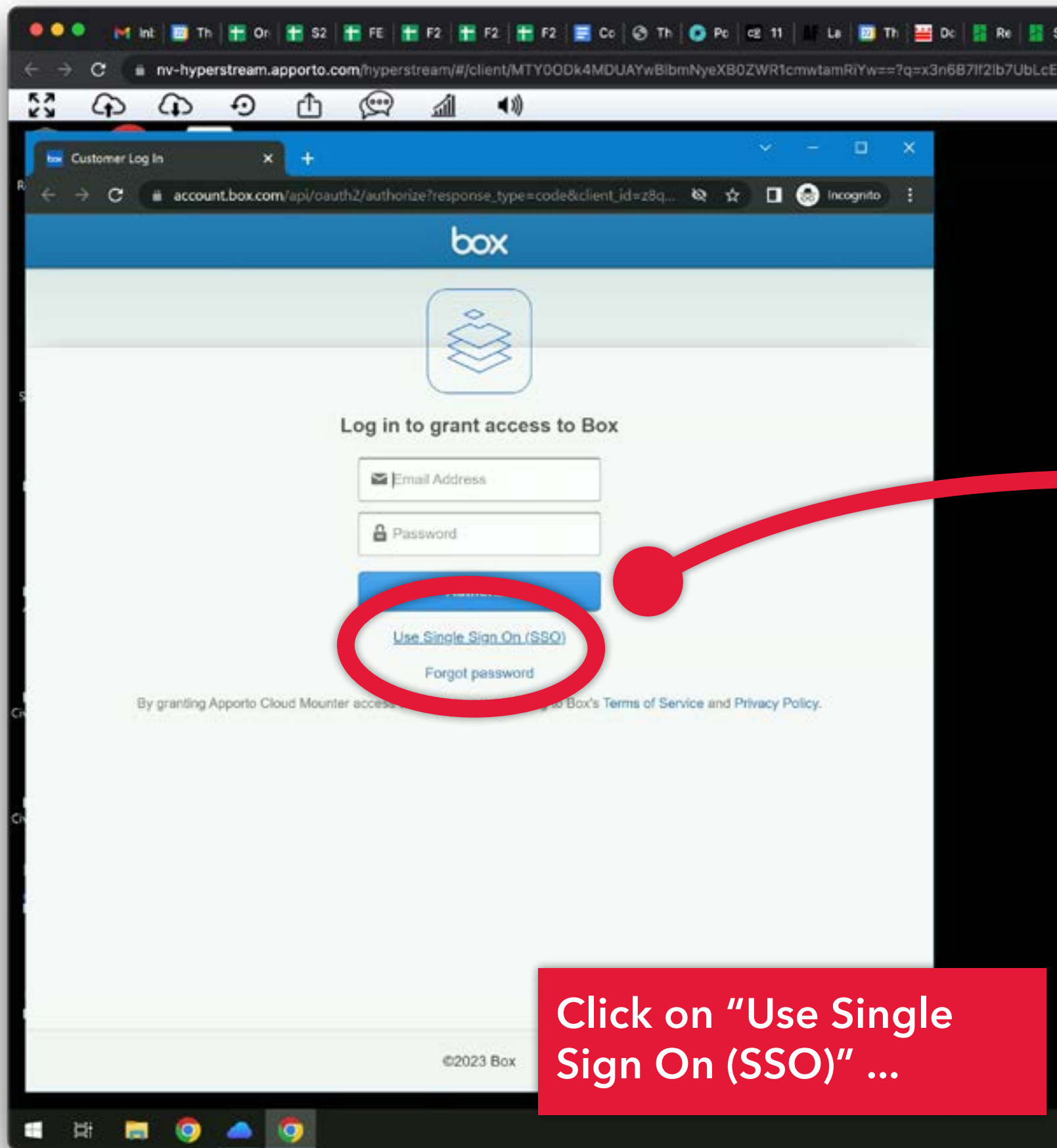
If you regularly move big files to-and-from the VM, you can use the Cloud Mounter to connect to cloud drives.

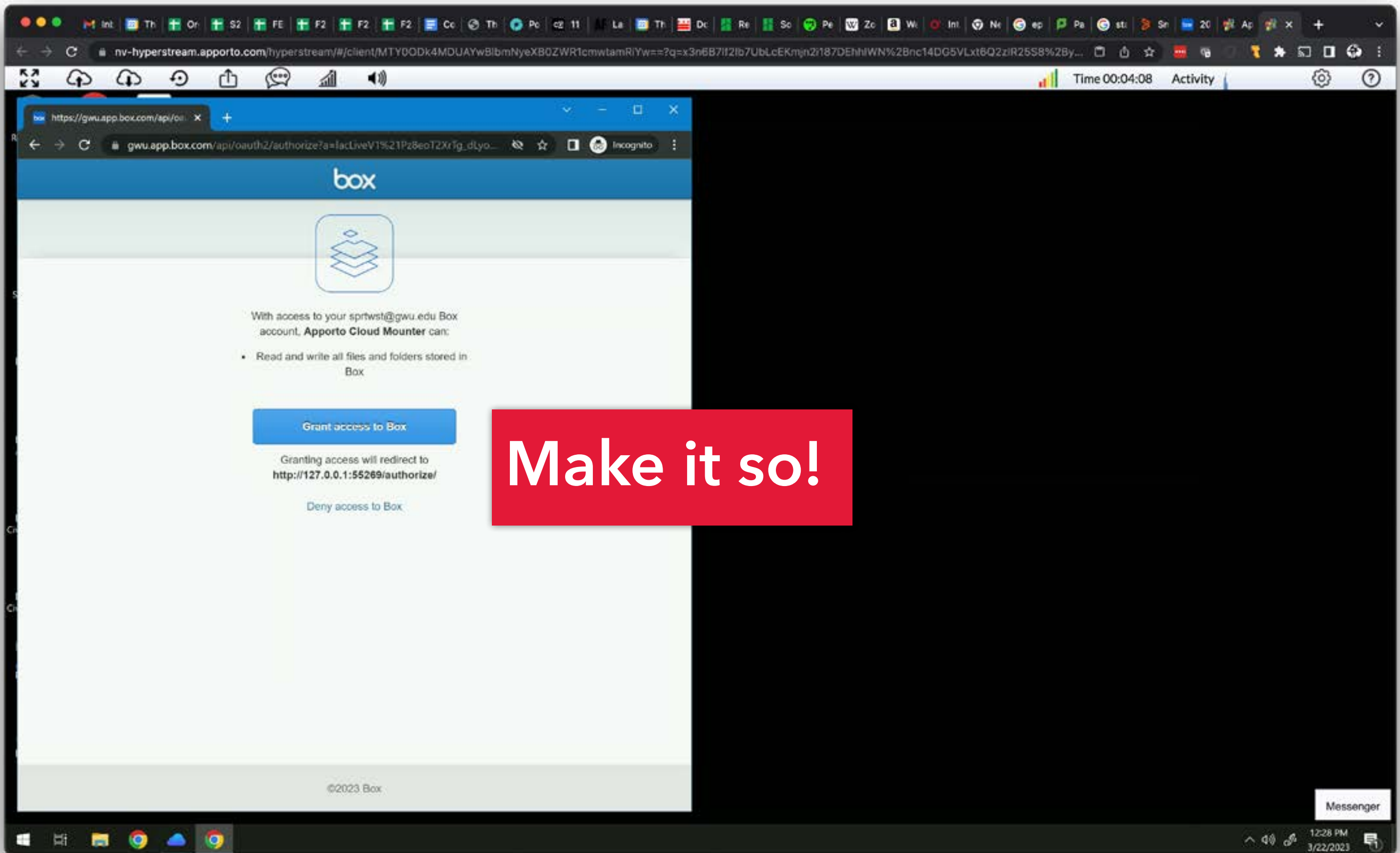


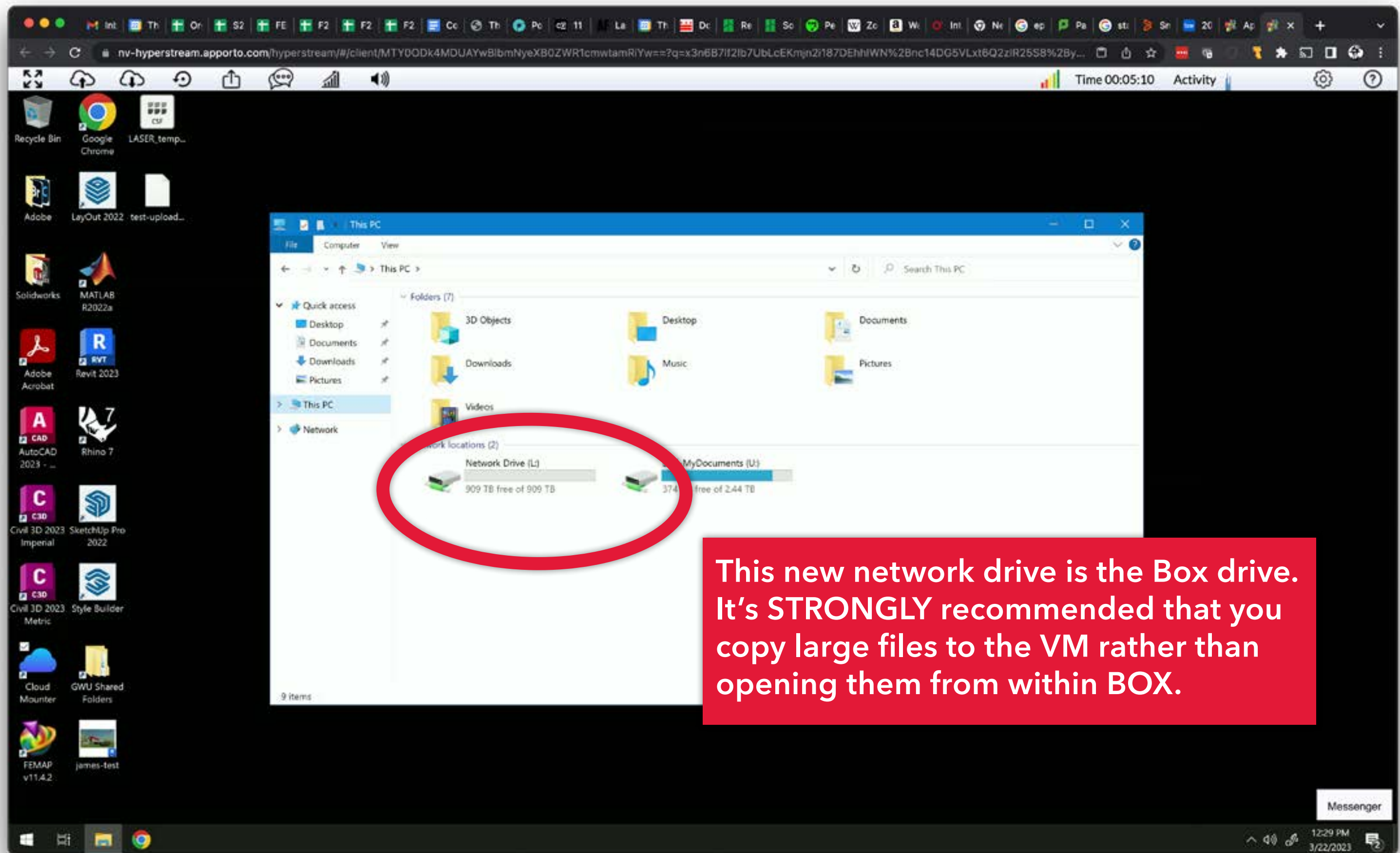
For example, I use GW  
Box for moving and  
backing up big files.  
Click to select the service  
you want to use...



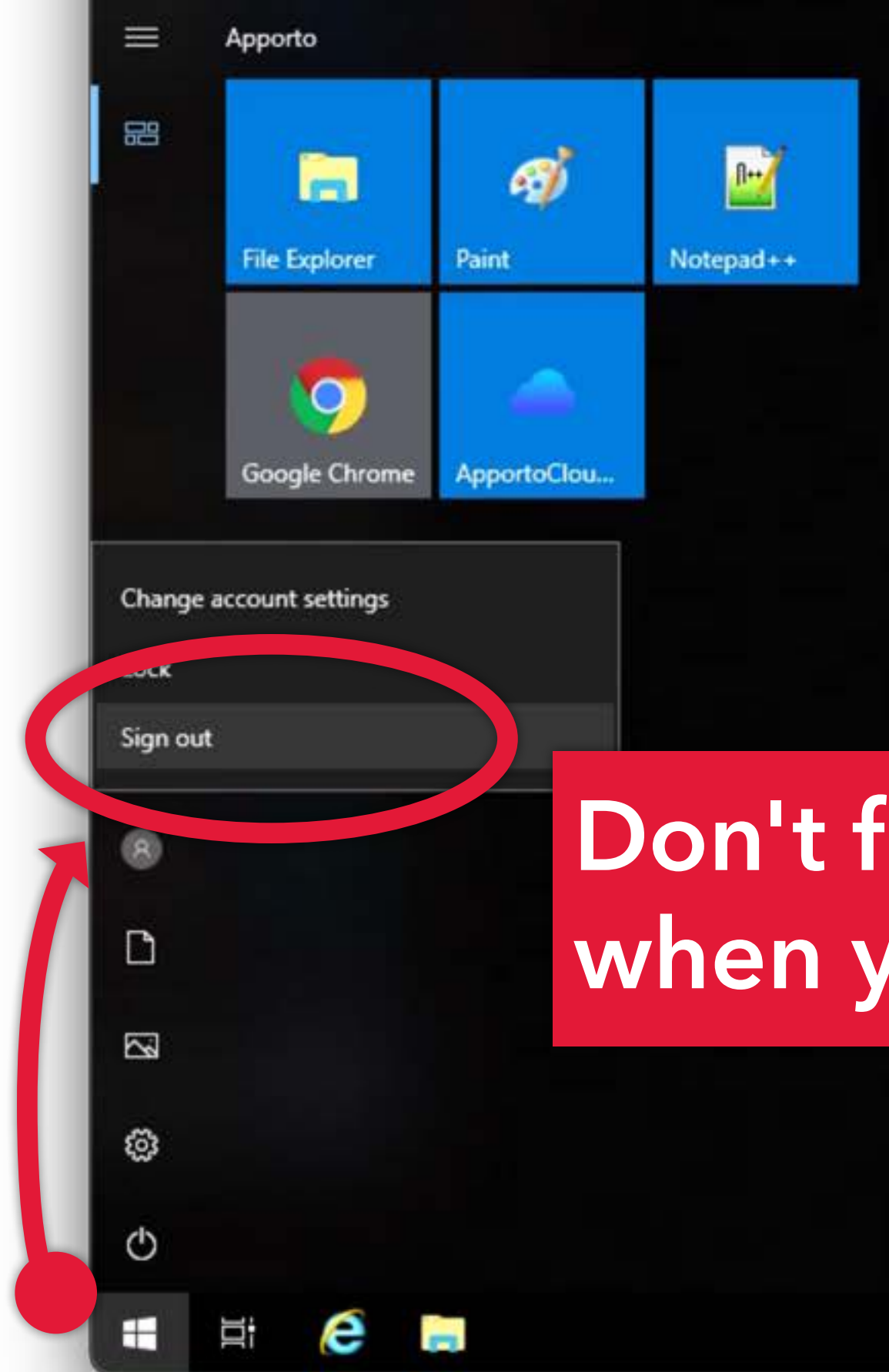
**“Connect at login/  
startup” will ensure  
your connected without  
having to log into Box  
every time.**







This new network drive is the Box drive. It's **STRONGLY** recommended that you copy large files to the VM rather than opening them from within BOX.



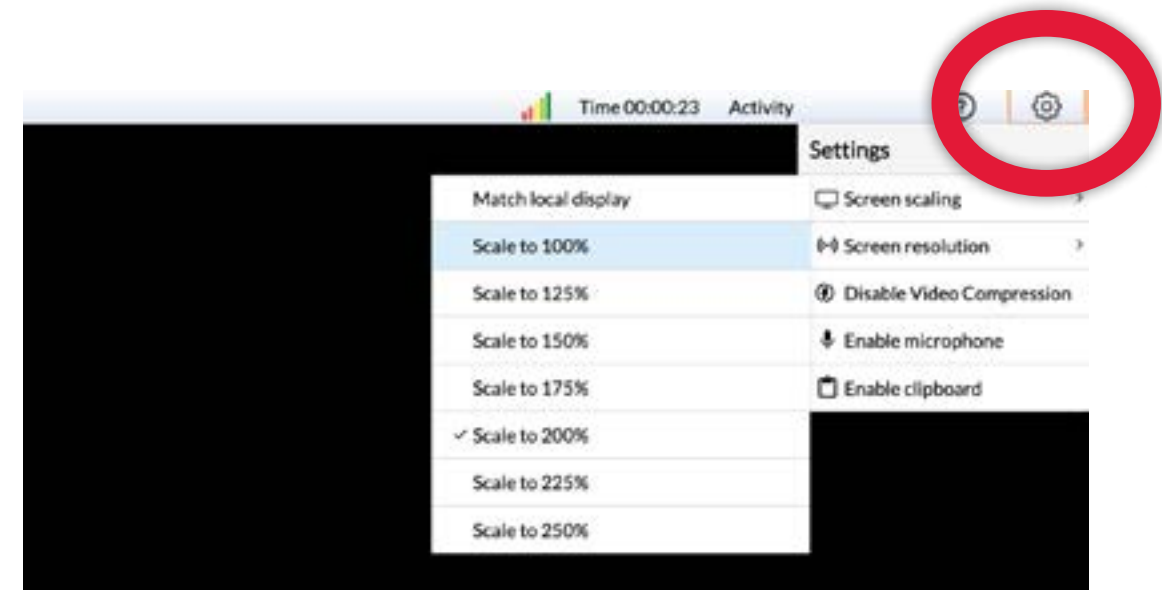
**Don't forget to sign out  
when you are done!**

## Useful things to know:

- + Apporto works best using the Google Chrome browser.
- + You can upload up 10GB of data.
- + Files you upload to Apporto will stay there as long as you are an enrolled student. Any inactive accounts will be de-provisioned after 18 months (then deleted after 30 days. Within 30 days, we can reactivate account without losing any data.)
- + You can't add fonts or plugins.

### Known issue:

On Mac computers and laptops with retina displays, the cursor won't line up with whatever you are attempting to click on. Fine details/small objects this can be extremely frustrating. Apporto is aware of the issue, but until it is fixed, the most reliable option is to plug your mac laptop into an external display (non-retina); there are external screens you can dock to outside of 219, in 157, and in B156.



### Known hack:

Changing the screen scaling to 100%, then back to 200% seems to reduce the cursor displacement. To change this, go to the 'Settings' dropdown in the upper-right corner of the Apporto desktop. From there, open the 'Screen Scaling' submenu to make the change.

If you run into technical issues you can  
create an IT ticket by emailing:  
[ithelp@gwu.edu](mailto:ithelp@gwu.edu)



**JAMES H**

**sprtwst@gwu.edu**

**Smith Hall 2A01 (never there)**

