

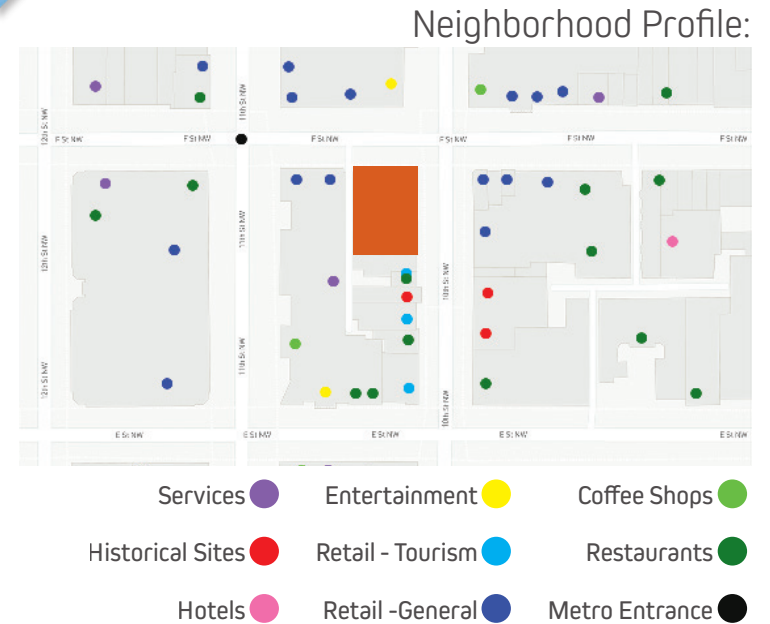
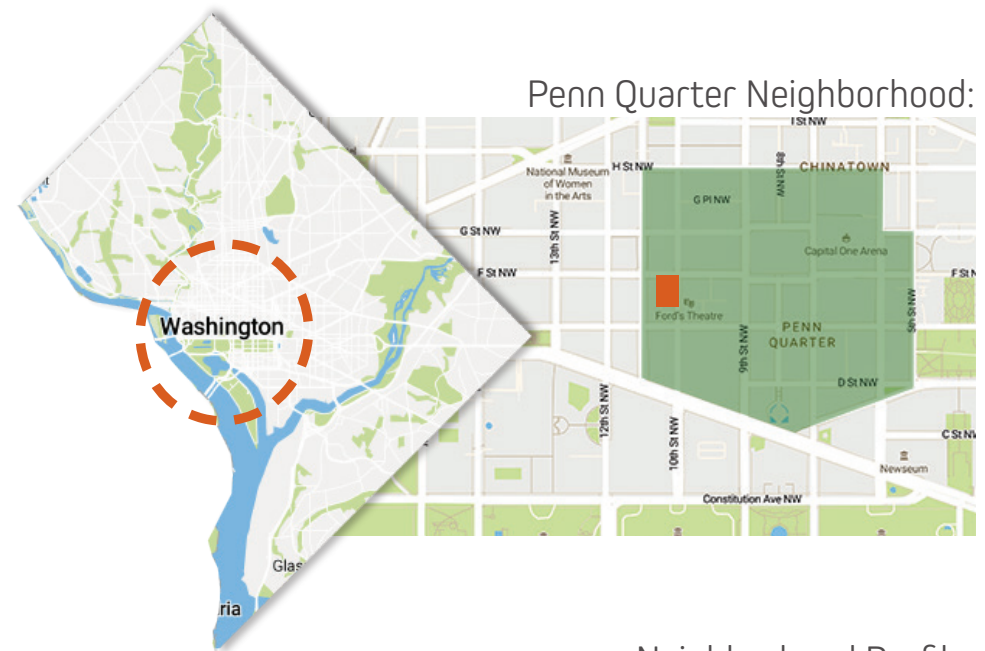


**NEXT HUB** *Proposal*

*Hannah Gilbertson*

# Site Context

## 1000 F Street



# User Groups →

**Adult  
Learners**

**Online  
Students**

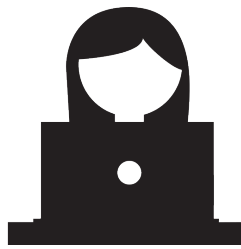
**Working  
Individuals**

**Faculty**

**Children**



A place for parents to work flexibly with childcare support



A place for pupils to meet and gather in person



A place for people to gain skills for their career goals

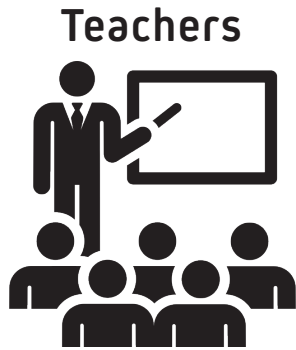


A place for teachers to connect with students & staff



A place for kids to hang out while parents are learning

# Research



+



*"They [students] not only learn from the organized curricula, but also from each other and from working collaboratively across many departments and disciplines."*<sup>1</sup>



+



*"Students need places where they can work collaboratively, on their own, in quiet and noisy areas and in multiple settings."*<sup>2</sup>

Classrooms



+

Hallways



*"Today's learning might happen using a combination of methods and locations, including lecture (auditorium), small group discussion (breakout room), demonstration (classroom), or interactive activity (media lab). An adaptable space accommodates the transition from one method to another..."*<sup>3</sup>



## Concept Statement



This space is inspired by the idea of a **student's academic journey**. The **act of learning** is not a static event but rather an **evolving and active experience**. It is comprised of the factual, rational, and concrete thinking that lays the ground work for basic understanding. It also includes the innovative and creative thinking that questions and experiments with that foundation and brings new ideas and discoveries.

NEXT Hub reflects these **two realms of learning** and the part they play in a students' experience as they make their way through academia.



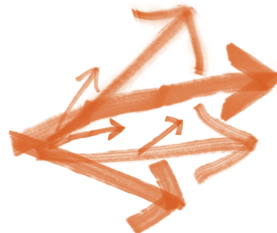
## *A students' journey through academia*

Formal learning journey



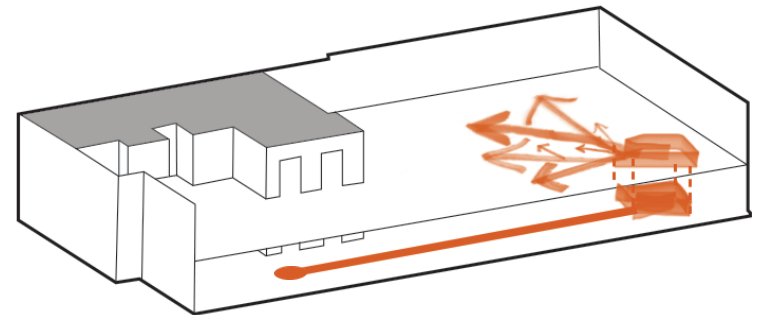
+

Informal learning journey

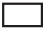




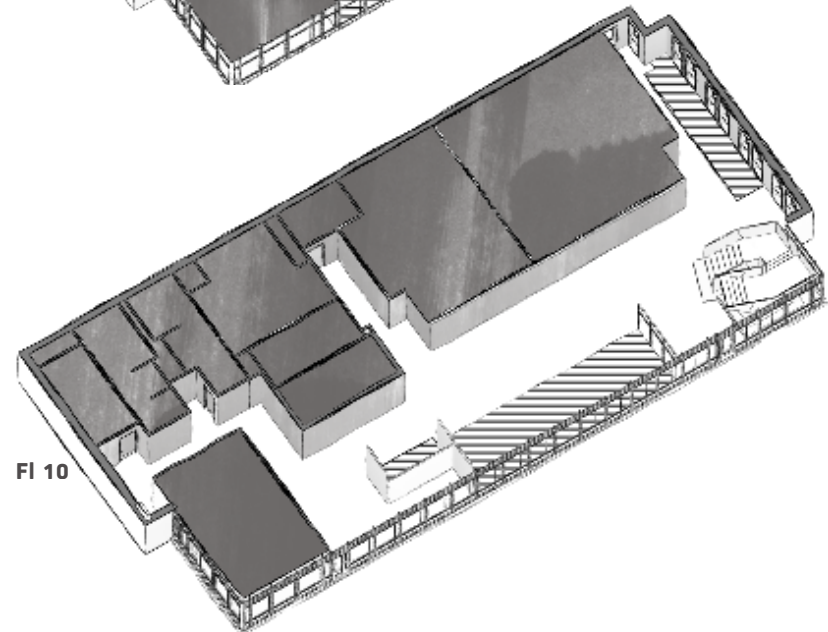
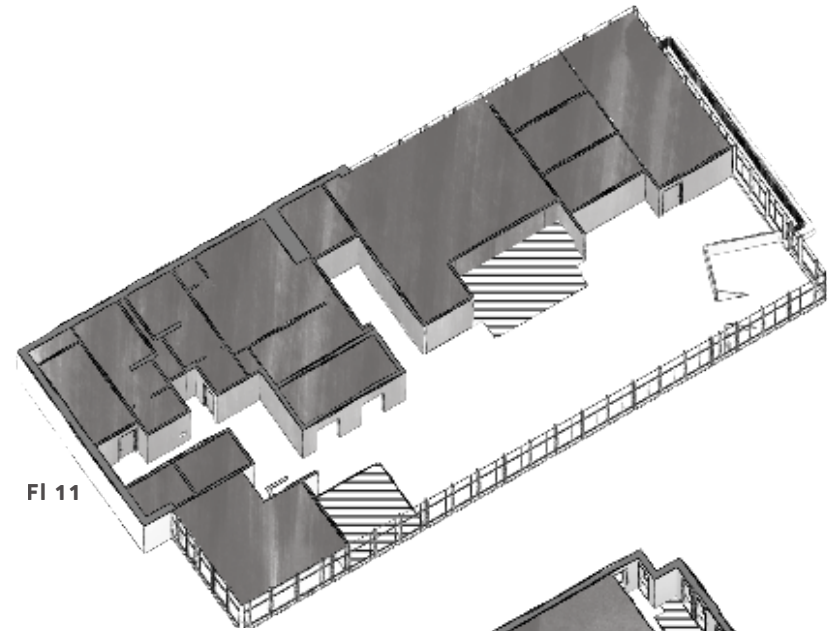
=

Complete student learning journey






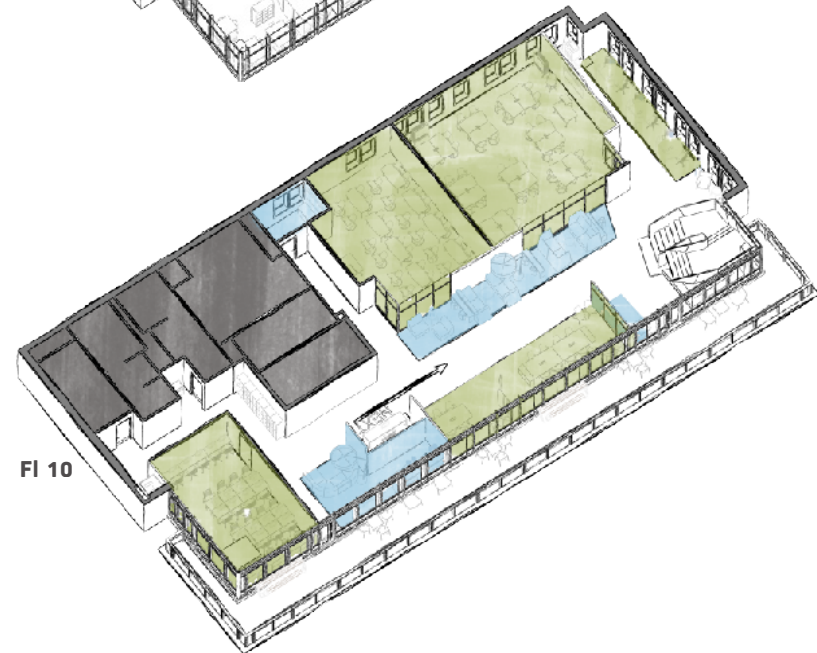
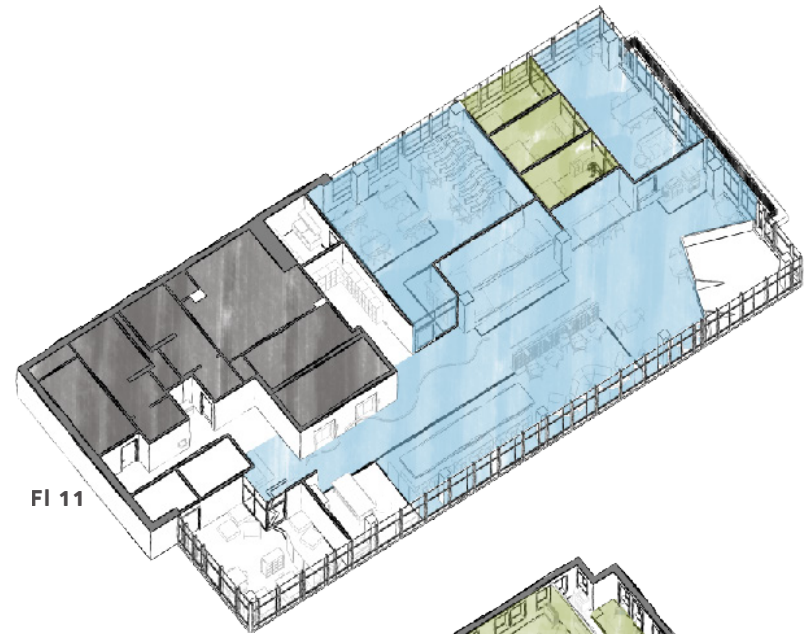
## *Open vs. Closed Environments*

- Open Space 
- Semi-Open Space 
- Closed Space 



## *Formal vs. Informal Environments*

Formal Space   
Informal Space   
NIC 

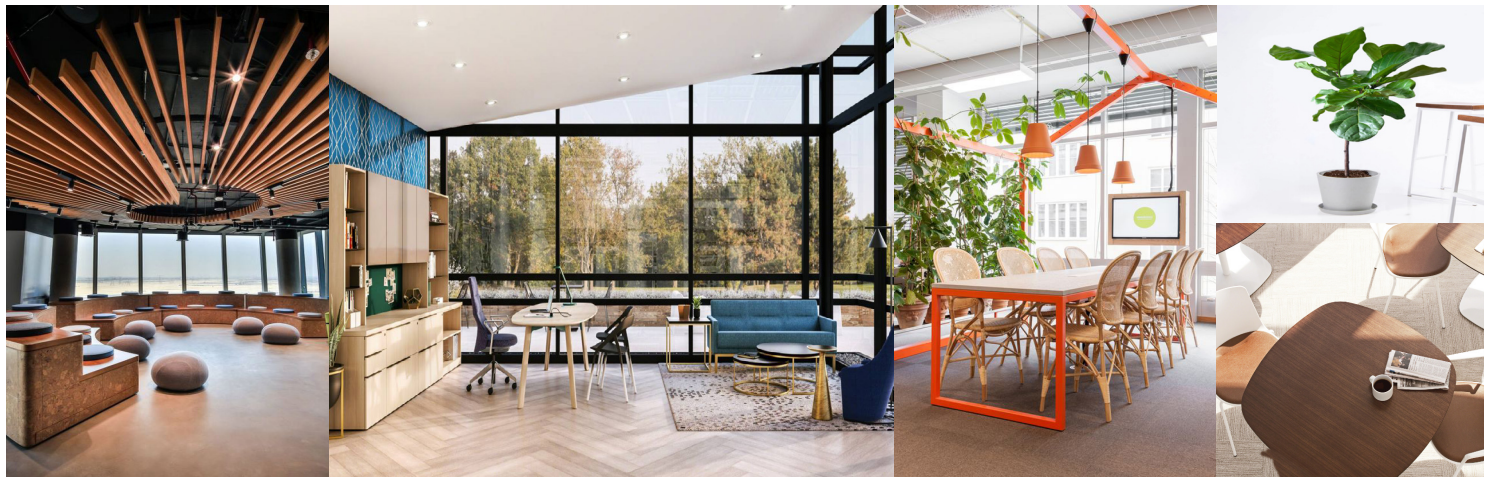


# Inspiration

Invigorating  
Comforting  
Enhances  
Concentration

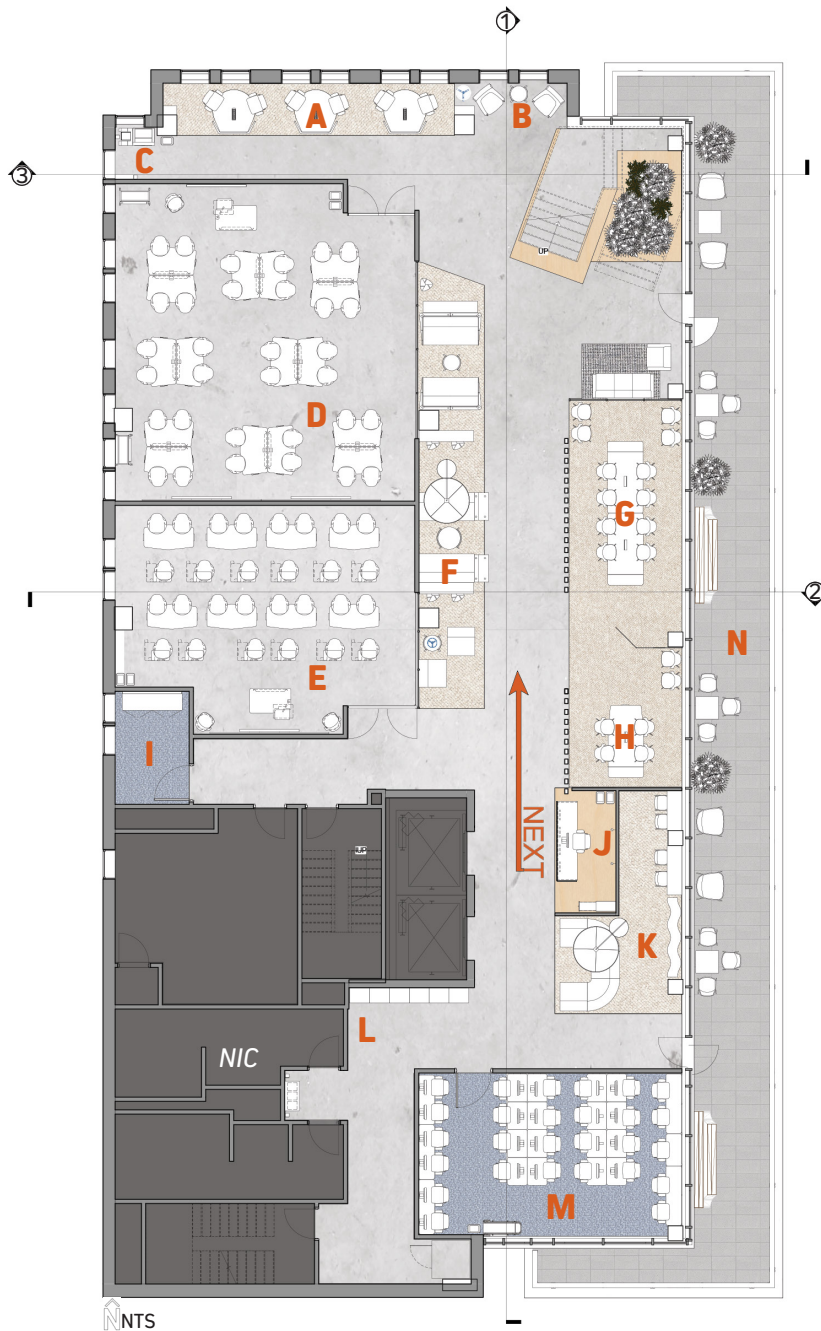
Calming  
Relaxing  
Increases  
Productivity

Stimulating  
Energy-boosting  
Sparks  
Creativity





# Floor Plans



## Floor 10:

- A** Closed Tutoring Center
- B** In Between Learning Space
- C** Copy Resource Center
- D** Large Active Multi-Purpose Classroom
- E** Active Learning Classroom
- F** In Between Learning Spaces
- G** Small Seminar Space #1
- H** Small Seminar Space #2
- I** Immersive Learning Area
- J** Check-in/Reception
- K** Lounge Area
- L** Lockers
- M** Computer Lab
- N** Patio

# Floor Plans

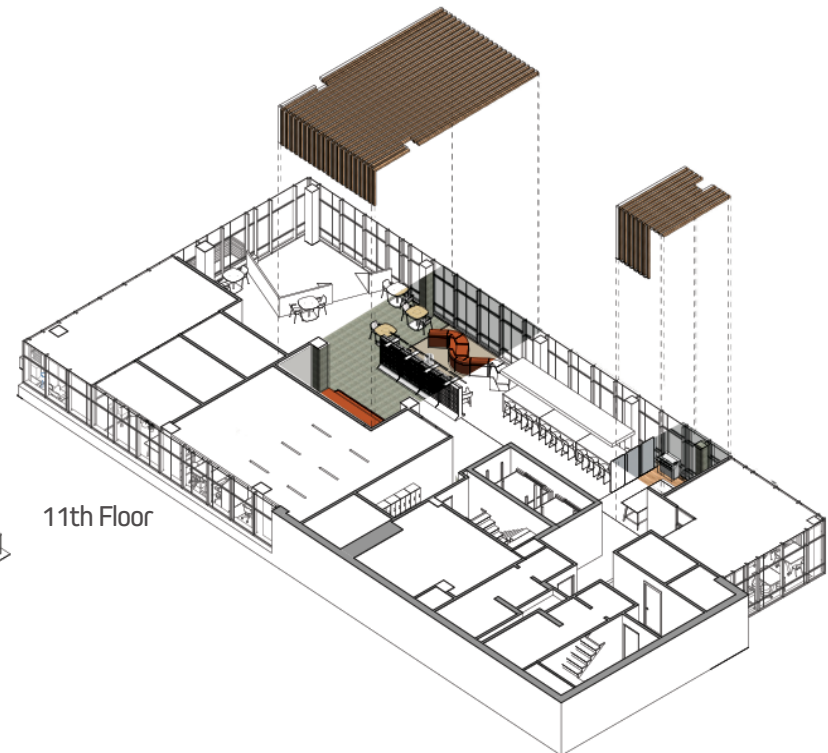
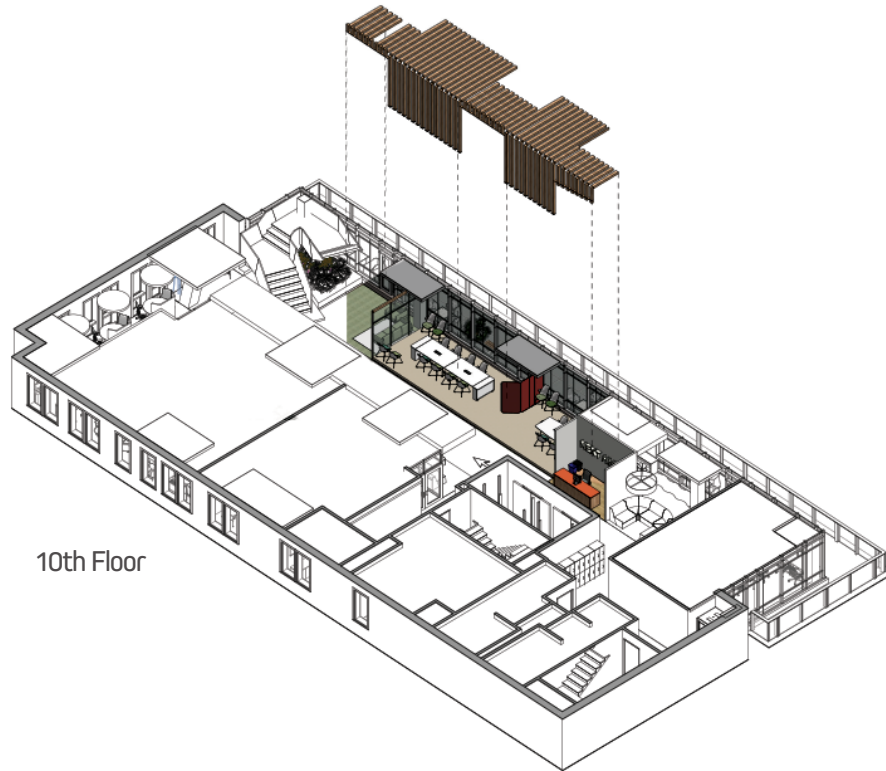


## Floor 11:

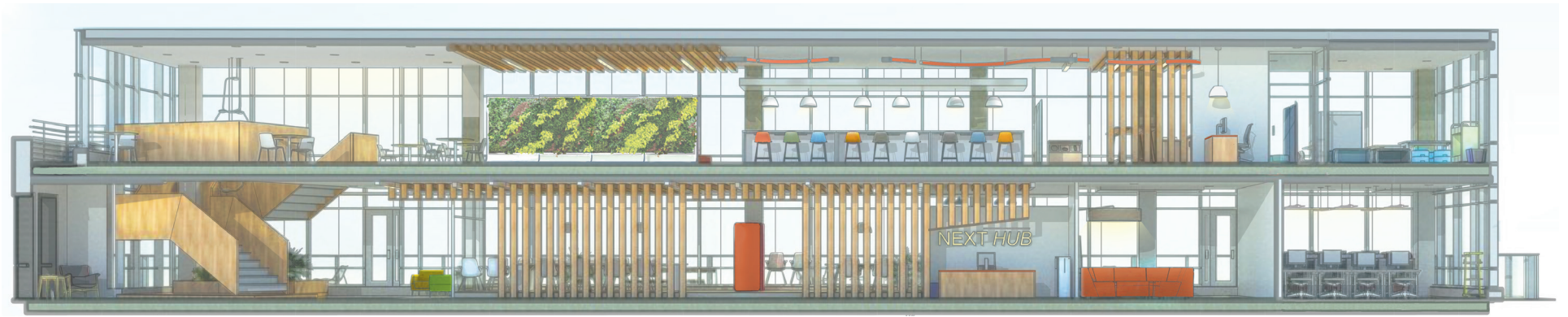
- A** Faculty Open Connection Hub
- B** Faculty Office #1
- C** Faculty Office #2
- D** Faculty Office #3
- E** Copy Resource Center
- F** Makerspace
- G** Makerspace Storage
- H** In Between Learning Space
- I** Learning Commons
- J** Lockers
- K** Open Tutoring Center
- L** Kitchen
- M** Childcare Check-in
- N** Childcare
- O** Childcare Restroom
- P** Mother's Room



# Wood Element

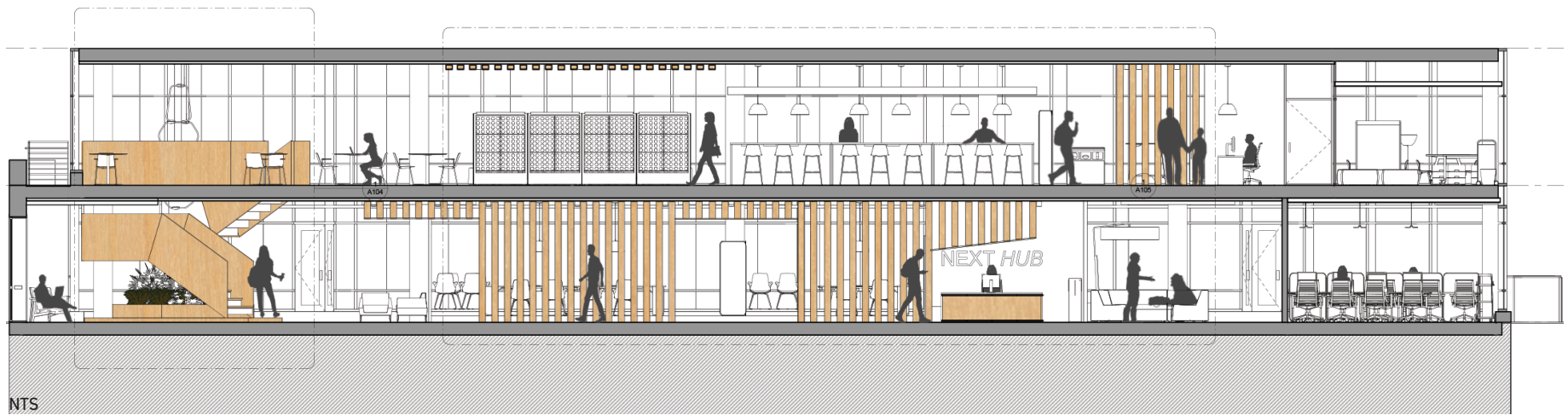


# Section Perspective



# Long Section

## Section 1



## Section 2



## Section 3



\_\_\_\_\_ *Reflected Ceiling Plan* \_\_\_\_\_




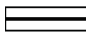




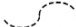
### Floor 10:

Floor plan of Floor 10. The layout includes several rooms with dimensions:

- Top left: 8' - 2"
- Top right: 20' - 4"
- Large central room: 9' - 4"
- Room below central: 9' - 4"
- Room to the right of central: 8' - 2"
- Room below central-right: 8' - 7"
- Room below that: 8' - 10"
- Room below that: 9' - 4"
- Bottom right room: 9' - 4"

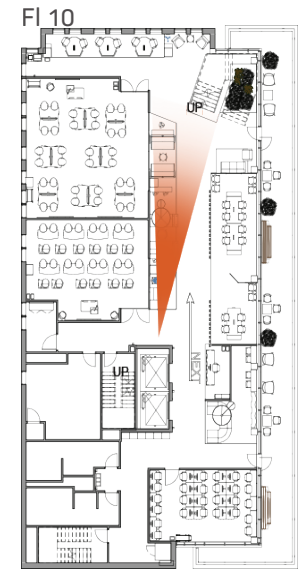
The plan also shows a staircase, a large dark area (possibly a parking garage or storage area), and various smaller rooms and corridors. A north arrow is located in the bottom left corner.

[illegible]

-  Ceiling Element
-  OCL Nova Pendant
-  Philips Ledalite TruGroove
-  Philips Ledalite EyeLine
-  ALW Superplane 4
-  BluDot Trace 4 Pendant
-  Philips LuxSpace Recessed
-  Rich Brilliant Willing Palindrome
-  ALW Crescent MoonRing



# In Between Learning Space No. 1



Philips LuxSpace Recessed



Campfire Pouf



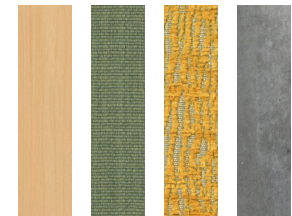
Campfire Slim Table



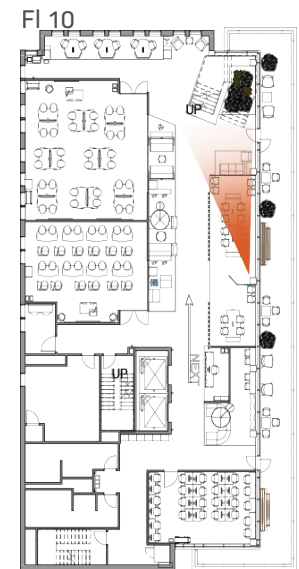
Campfire Big Lamp



Campfire Lounge Chair



# Small Seminar Space No. 1



Flex Screen



Node X Base Seat



ALW Superplane 4



OCL Nova Pendant

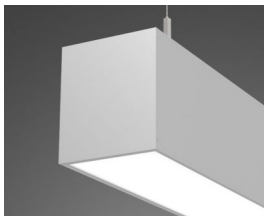
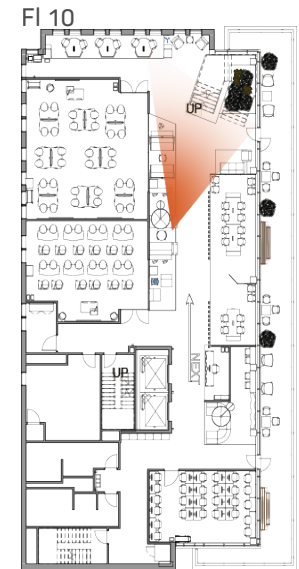


Verb Media Table





# Central Staircase



ALW Superplane 4



Campfire Screen



Visalia Lounge Seat



BluDot Trace 4



Embrace Chair



# Learning Commons



Sagegreenlife Wall



Flex Screen



ALW Superplane 4



Enea Lottus Square Table



Enea Lottus Side Chair

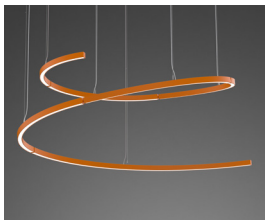


Campfire Lounge Chair





# Open Tutoring Center & Kitchen



ALW Crescent MoonRing



OCL Nova Pendant



Enea Lottus Seat



Campfire Big Table



Verlay Table



\_\_\_\_Thank You

