

The ABCs of Corcoran and GW: *A Resource Guide for New Undergraduate Students 2021-22*



Corcoran School
of the Arts & Design

THE GEORGE WASHINGTON UNIVERSITY



This guide was developed by Corcoran Ambassador students to ease the transition for incoming students as you navigate life within the Corcoran and at GW. We know that coming to college is a big change that comes with many uncertainties.

Within this guide, we have included a broad range of topics, in alphabetical order, to make sure you know all the ABCs not only of here as a student but of being a part of the greater Washington, D.C., area.

Welcome to the next few years of your life!
We hope this guide can steer you to all the resources that are available and within your reach as you get accustomed to this new stage in your life.

Welcome again, and most importantly, RAISE HIGH!

Corcoran Ambassadors

TABLE OF CONTENTS

<u>Academic Resources</u>	5
<u>Advising</u>	6
<u>Career Services</u>	9
<u>Covid-19 Response</u>	9
<u>Corcoran-Specific Resources</u>	11
<u>Dining and GWorld Card</u>	14
<u>Disability Services</u>	16
<u>Emergencies</u>	17
<u>Financial Aid</u>	17
<u>Health Services and Support</u>	17
<u>Housing</u>	18
<u>Information and Technology Services (IT)</u>	19
<u>Orientation</u>	20
<u>Program Contacts and Office Locations</u>	21
<u>Registrar</u>	22
<u>Student Life</u>	25
<u>Study Abroad</u>	25
<u>Sustainability</u>	27
<u>Transportation in DC and GW</u>	28
<u>Washington D.C. Experiences</u>	30



Academic Resources

The information here will help you locate any academic resources you may need from different offices around campus.

GW Bulletin: <http://bulletin.gwu.edu>

Gelman Library: <https://library.gwu.edu>

TIP: The 6th floor of Gelman is a great place to find arts resources.

Interlibrary Connections: <https://library.gwu.edu/services/interlibrary-loan>
Interlibrary Loan (ILL) is a service available to current GW students registered for credit and for current faculty members and staff. You can request material not available at any of the GW Libraries or Washington Research Libraries Consortium (WRLC) libraries.

Writing Center: <https://writingcenter.gwu.edu>

Writing Center Appointments:
<https://writingcenter.gwu.edu/appointments>

Academic Commons

Academic Software and Technology:
<https://academiccommons.gwu.edu/academic-software-and-technology>

Fellowships: <https://academiccommons.gwu.edu/fellowships>

Language Support:
<https://academiccommons.gwu.edu/language-support>

Peer Tutoring and Review Sessions:
<https://academiccommons.gwu.edu/tutoring>

Research: <https://academiccommons.gwu.edu/research>

Schedules and Courses:
<https://academiccommons.gwu.edu/schedules-and-courses>

Skills for Virtual Learning:
<https://academiccommons.gwu.edu/skills-virtual-learning>

Study Skills: <https://academiccommons.gwu.edu/study-skills>

Syllabus Bank: <https://academiccommons.gwu.edu/syllabus-bank>

Textbooks: <https://academiccommons.gwu.edu/textbooks>

Workshops and Academic Events:
<https://academiccommons.gwu.edu/workshops-academic-events>

Writing and Research Help:
<https://academiccommons.gwu.edu/writing-research-help>

GW Bulletin

Use the GW Bulletin to find detailed information about academic policies, requirements for degrees, minors and GPAC (general education).

GW Bulletin: <http://bulletin.gwu.edu>

Corcoran Undergraduate Faculty Advisors

Each degree program has a faculty advisor who will help you navigate the curriculum, make recommendations on program-specific electives, and work with you to plan your course load each semester.

Art History: Alexander Dumbadze - dumbadze@gwu.edu

Dance: Dana Tai Soon Burgess - dtsb@gwu.edu

Dual Fine Art and Art History: Michele Carlson - michelecarlson@gwu.edu

Fine Arts BA/BFA: Michele Carlson - michelecarlson@gwu.edu

Foundations: Allyson Vieira - allysonvieira@gwu.edu

Graphic Design: Siobhan Rigg - srigg@gwu.edu (summer 2021)
Sharmila Karamchandani - skaram24@gwu.edu (starting August 15, 2021)

Interaction Design: Kevin Patton - kevinpatton@gwu.edu

Interior Architecture: Scott Jones - scottjones@gwu.edu

Theatre: Matt Wilson - mattwilson@gwu.edu

Music: Eugene Montague - eugene_m@gwu.edu

Photojournalism and Photography Minor: Matt Eich - matteich@gwu.edu

Columbian College of Arts and Sciences Advising

In addition to faculty advisors within the program area, all Corcoran students are assigned CCAS POD advisors who will help with GPAC (general education) requirements and are a great resource for planning a double major or minor within CCAS programs. It is important to meet with both your faculty and POD advisors.

Pod 1 - For last names A-G

E-mail: POD1@gwu.edu

Meet the advisors: <https://advising.columbian.gwu.edu/pod-1-0>

Pod 2 - For last names H-N

E-mail: POD2@gwu.edu

Meet the advisors: <https://advising.columbian.gwu.edu/pod-2-0>

Pod 3 - For last names O-Z

E-mail: POD3@gwu.edu

Meet the advisors: <https://advising.columbian.gwu.edu/pod-3-0>

Advising for GW Schools Outside CCAS

If you are pursuing a double major or a minor within another GW school, you will need to meet with program advisors from those schools as well to ensure you are meeting all the requirements.

GWSB:

<https://business.gwu.edu/current-students/undergraduate/advising-center>

SEAS: <https://www.seas.gwu.edu/undergraduate-student-services-advising>

Elliott: <https://elliott.gwu.edu/undergraduate-academic-advising>

SMPA: <https://smpa.gwu.edu/faculty>

SMHS: <https://smhs.gwu.edu/about/smhs-leadership>

SON: <https://nursing.gwu.edu/academic-advising>

CPS: <https://www.cps.gwu.edu/program-directors>

GWSPH: <https://publichealth.gwu.edu/academics/undergraduate-advising>

Additional Advising Resources

Academic Advising:

<https://academiccommons.gwu.edu/academic-advising>

Advising for Athletes/Athletics: <https://gwsports.com/sports/2018/7/23/school-bio-gewa-academic-support-about.html.aspx>

University Honors Program:

<https://honorsprogram.gwu.edu/make-appointment>

Pass/No Pass FAQ: https://advising.columbian.gwu.edu/sites/g/files/zaxdzs1876/f/downloads/FAQ%20Pass_no%20pass%20fall%20and%20spring%202020%202021%20updated_1.pdf





Center for Career Services

GW offers career services support for students through the Center for Career Services. Contact the Center for Career Services for personal career coaching, self-assessment, resume and portfolio building, and more.

Center for Career Services:

<https://careerservices.gwu.edu>

Main E-mail: gwcareercenter@gwu.edu

Student Employment (GW FWS and Non-FWS positions) E-mail:
gwse@gwu.edu

Career Coaching: <https://careerservices.gwu.edu/coaching>

Student Employment Opportunities

Many of our students secure part-time positions on campus while studying at GW. Employment opportunities on campus are posted through Handshake. Be sure to check each semester for the latest available positions.

Apply for jobs and internships on Handshake:

Website: <https://gwu.joinhandshake.com>

E-mail: handshakehelp@gwu.edu

In addition, Corcoran posts external job and internship opportunities that may be of interest to Corcoran students.

Corcoran Student Opportunities Website:

<https://corcoran.gwu.edu/student-opportunities>

Coronavirus Response

Use these pages to find updated information about how GW is providing COVID-19-related support for students and to learn more about D.C. COVID-19 policies and resources.

GW Testing: <https://coronavirus.gwu.edu/testing-tracing>

GW Covid Updates: <https://coronavirus.gwu.edu>

D.C. Covid-19 Testing: <https://coronavirus.dc.gov/testing>

D.C. Vaccine Updates: <https://coronavirus.dc.gov/vaccine>



Did you know?

Many local businesses offer discounts to GW students. Here are some stores that Corcoran students use for art supplies:

Blick: <https://www.dickblick.com/stores/district-of-columbia/washington>

Plaza Art: <https://www.plazaart.com>

Pro Photo DC: <https://www.instagram.com/prophotodc>

The Corcoran

Our history dates back to 1869 when William Wilson Corcoran founded the Corcoran Gallery of Art with much of his own collection and formed one of the first major publicly accessible art collections in the nation's capital. The gallery, originally housed in a building on the corner of Pennsylvania Avenue and 17th Street NW, was a draw for D.C. residents, visitors and even aspiring artists. By the 1870s, semiformal lessons were being offered by artists in the gallery.

In 1897, Corcoran moved into the historic Flagg Building, where many of our classes are taught today, and one year later, in 1878, Corcoran founded an art school associated with the gallery.

Since integrating into the George Washington University in 2014, the Corcoran has undergone a multi-dimensional transformation while still maintaining our founder's vision of a place "dedicated to the art and used solely for the purpose of encouraging the American Genius."

The Corcoran School of the Arts & Design prepares its graduates to be the next generation of global leaders. Part of the Columbian College of Arts and Sciences, the school functions as an incubator for artists, designers, performers, and scholars, who learn from internationally renowned faculty at the intersection of creativity and social innovation.

We are a community of civically engaged artists and practitioners, aiming to impact the world through social change. We pride ourselves on the diversity of our practice and view ourselves as a place of possibility for students instead of teaching art in a singular way. Our students are poised not just to join the creative field of their choice, but also to define it for themselves as they become well versed in practice, research and collaboration.

Corcoran-Specific Resources

Our website contains a lot of information about Corcoran performing and visual arts spaces, design studios, classrooms and more. Visit these pages to learn more about the spaces you will use to create your work, find arts and design external internships and jobs, and support your peers by attending performances/exhibitions throughout the year!

Corcoran Spaces:

<https://corcoran.gwu.edu/our-spaces>

Appointments for Open Studio Space:

<https://corcoran.gwu.edu/our-spaces>

Arts and Design Job and Intership Opportunities (external):

<https://corcoran.gwu.edu/student-opportunities>

Calendar of Exhibitions and Performances:

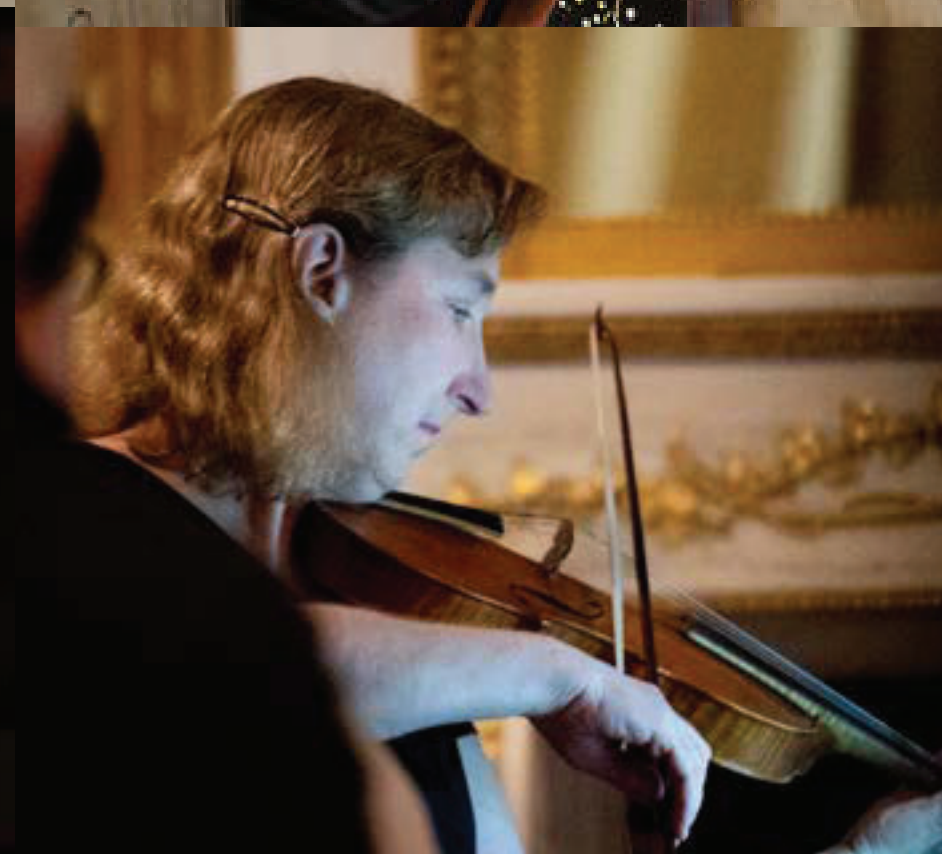
<https://corcoran.gwu.edu/exhibitions-performances-conversations>

Past Event Recordings: <https://corcoran.gwu.edu/past-events>

Follow Us on Social Media:

Facebook: <https://www.facebook.com/CorcoranGW>

Instagram: https://www.instagram.com/corcoran_gw



Submit your work!

We regularly feature student work on our website and social media platforms.

[Complete this form](#) to have your work (artwork, performances, choreography, research, designs, photos and more) featured or to do a social media takeover!



Dining at GW

Here's all the information you need about Dining at GW. Even though we do not have a traditional dining hall, there are plenty of yummy options! Use the "CampusCard" search engine to see 105+ Dining Partners including kosher, vegan, halal, gluten-free, breakfast and more!

Where to Eat: <https://dining.gwu.edu/where-eat>

Healthy Fresh Meals: <https://dining.gwu.edu/healthy-fresh-meals>

GWorld Card Office



The GWorld card is the official ID card at GW. Your card serves as your university identification, holds your meal plan and colonial cash accounts, and allows you to access facilities on campus.

GWorld Website:

<https://gworld.gwu.edu/university-id>

Phone: 202-994-1795

E-mail: gworld@gwu.edu

GW Dining Apps

Use these apps to make your dining experience even easier!

GET App to check your balance, SAGE App for Vern Dining and The Budgeting App to plan:

https://mobileapp.gwu.edu/gwu_mobile/dining/index

The Store

The Store is a student-run food pantry at the George Washington University that is managed by The Store student organization and the Division for Student Affairs, providing resources and support for students living with food insecurity. Over the past couple of years, the awareness of this need has increased on college campuses as students make hard choices about how to spend their limited resources. The Store was founded on the principles of faith, trust and respect, and these values guide our work every day. Our mission is to address student need at GW by offering food and other resources to ensure that every student has the opportunity to succeed.

The Store Website: <https://studentlife.gwu.edu/store>

Community Supported Agriculture (CSA)

The CSA program connects students with local farmers and producers to purchase CSA farm shares of fresh, local produce and other food items using GWorld.

E-mail gwgardenmanager@gmail.com for more information on CSAs and other GroW Garden information.

CSA Website: <https://dining.gwu.edu/community-supported-agriculture>

Additional Dining Resources

Student Discount Meals:

<https://dining.gwu.edu/meal-deals-discounts>

Programming/Events (ex. Supermarket Sundays):

<https://dining.gwu.edu/programming-events>



Disability Services

These websites have detailed information about the Disability Support Services offered by GW for students.

Accessibility: <https://accessibility.gwu.edu>

To learn about policies and procedures, classroom services, digital accessibility, and accessibility on campus.

Disability Support Services (DSS): <https://disabilitysupport.gwu.edu>

Register with DSS:

<https://disabilitysupport.gwu.edu/register-disability-support-services>

DSS Registration Portal:

<https://disabilitysupport.gwu.edu/disability-support-services-registration-portal>

Document Your Disability:

<https://disabilitysupport.gwu.edu/document-your-disability>

Request Test Proctoring Services:

<https://disabilitysupport.gwu.edu/test-proctoring-services>

Request Interpreting or Captioning Services:

<https://disabilitysupport.gwu.edu/interpreting-and-captioning-services>

Request Form: <https://docs.google.com/forms/d/e/1FAIpQLSfWc0CBB1f2YDKIk4zjrYgYYbezDRWGYBbt0x3m0GtavWT-LA/viewform>

Access Notes: <https://disabilitysupport.gwu.edu/accessing-your-notes>

Request a digital DSS Letter for Professors:

<https://disabilitysupport.gwu.edu/letters-professors>

Emergencies

Keep the GW Police Department (GWPD) number and e-mail handy in case of an emergency!

GWPD and EMeRG:

Phone: 202-994-6111

Non-emergencies email: gwpcd@gwu.edu

GW Guardian App:

This app offers an additional layer of security to the University's emergency mass notification services. Free to the GW Community, this personal safety app gives users on and off campus access to various resources all in one place.

Download the Guardian App: <https://safety.gwu.edu/gw-guardian-app>

Financial Aid

Here is a list of financial aid support you may need:

Financial Aid Office: <https://financialaid.gwu.edu>

FAFSA: <https://studentaid.gov/h/apply-for-aid/fafsa>

Financial Aid Document List: <https://financialaid.gwu.edu/document-list>

Submission Guidelines:

<https://financialaid.gwu.edu/form-and-document-submission-guidelines>

Health Services

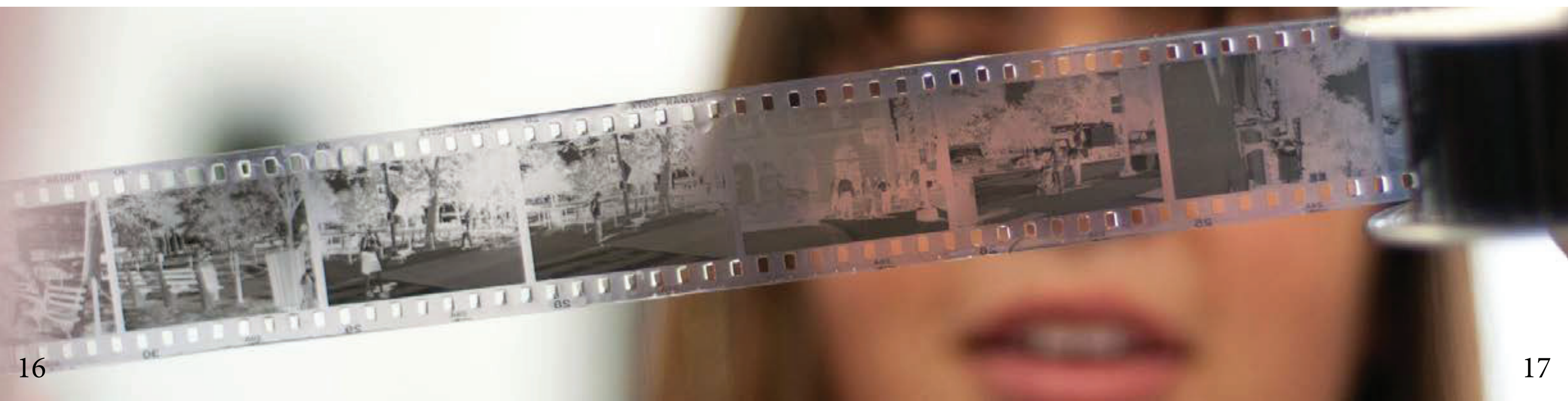
Colonial Health Center: <https://healthcenter.gwu.edu>

Medical and Psychiatric Services:

<https://healthcenter.gwu.edu/medical-care>

Counseling and Psychological Services:

<https://healthcenter.gwu.edu/counseling-and-psychological-services>



Housing

This page has information on various housing options and services available to students.

Residence Halls

First-Year Halls: <https://living.gwu.edu/first-year>

Arts and Design LLC: <https://corcoran.gwu.edu/artsliving>

Upperclassmen Halls: <https://living.gwu.edu/upperclass>

Specialized/Community Housing: <https://living.gwu.edu/themed-housing>

Greek Housing: <https://living.gwu.edu/greek-letter-organizations>

Moving In

Move-in/out Dates: <https://living.gwu.edu/move>

What to Bring: <https://living.gwu.edu/what-bring>

Items Prohibited on Campus List:
<https://safety.gwu.edu/prohibited-items-list>

Locked Out?

It happens sometimes! These sites will help you get back into your room.

Lockout Resources: <https://living.gwu.edu/lockouts>

Download the Mobile ID App, which is very helpful in this scenario:
<https://gworld.gwu.edu/mobile-id>

You've Got Mail!

Mail and Package Services: <https://mailservices.gwu.edu>

Mailing Address Help: <https://mailservices.gwu.edu/mailing-addresses>

Shipping and Storage: Helpful for over the summer or if studying abroad.
<https://living.gwu.edu/shipping-storage-information>

Laundry

Laundry: <https://living.gwu.edu/laundry>

Laundry Tracker: <https://facilities.gwu.edu/laundry>

Something Broken?

FIXIT Requests: <https://fixit.assetworks.io>

Information and Technology Services (IT)

These technology support and resources are available to students for free.

Information & Technology Services Help:

Phone: 202-994-GWIT (4948)

Email: ithelp@gwu.edu

Martha is GW's "Virtual Agent," available 24/7/365:

[Learn more about Martha](#)

Chat online with her here: <http://go.gwu.edu/GWiz>

GWiz Knowledge Base for more answers:

<https://go.gwu.edu/digitalworkplace>

Adobe Creative Campus (all students have access):

<https://it.gwu.edu/adobe-creative-campus>

Download Microsoft Office:

<https://it.gwu.edu/microsoft-office-365-free-gw-community-0>

More software is available for download (some vary by home school):

<https://it.gwu.edu/software>

GWEB, E-mail and Internet Access

The GWeb Information System, sometimes referred to as Banner or Banner Self Service, allows online access for GW students, faculty, and staff to many GW services.

Current students log into the GWeb Information System using their GW email address (NetID@gwu.edu) and password.

GWeb: <https://it.gwu.edu/gweb>

Activate and Access Your GW E-mail/Net ID:

<https://it.gwu.edu/activate-or-access-gw-email>

Internet Access on Campus:

<https://it.gwu.edu/internet-access>

Orientation for New Students

Orientation is an important resource to help introduce you to the academic culture, community expectations and resources, and involvement opportunities both on-campus and around the city.

Information on GW's New Student Orientation can be found here:
<https://studentlife.gwu.edu/new-student-orientation>

In addition, our programs are also planning program-specific orientation sessions to welcome you to the Corcoran!

Find your program's information on our website:
<https://corcoran.gwu.edu/undergraduate-orientation>

We look forward to seeing you at Orientation Week - August 22-29, 2021!



image above: Flagg Building



image above: Phillips Hall
and Smith Hall of Art



image above: Building XX

Program Contacts and Office Locations

Art History

Location: Smith Hall of Art, Room 101 - 801 22nd St., NW

Andy Johnson, Program Administrator

E-mail: cahist@gwu.edu

Phone: 202-994-6085

Interior Architecture

Location: Flagg Building, Room 120 - 500 17th St., NW

Liz Meitner, Program Administrator

E-mail: ciarc@gwu.edu

Phone: 202-242-6706

Studio Arts

Location: Flagg Building, Room B132 - 500 17th St., NW

Eliza Mott, Program Administrator

E-mail: csarts@gwu.edu

Phone: 202-994-0312

Design

Location: Flagg Building, Room 120 - 500 17th St., NW

Athena Naylor, Program Administrator

E-mail: cdes@gwu.edu

Phone: 202-994-0242

Music

Location: Phillips Building, Basement Room 144 - 801 22nd St. NW

Katelyn Hensel, Program Administrator

E-mail: cmus@gwu.edu

Phone: 202-994-0100

Theatre & Dance

Location: Building XX, 3rd Floor - 814 20th St., NW

Gabrielle Wingate, Program Administrator

E-mail: ctad@gwu.edu

Phone: 202-994-8072

Corcoran Administrative Offices

Location: Flagg Building, Room 120 - 500 17th St., NW

Registrar

Find resources below from the Registrar's Office to help you plan your coursework and complete your degree at GW.

Schedule of Classes: <https://my.gwu.edu/mod/pws>

Registration Dates: <https://registrar.gwu.edu/fall-spring-schedule>

Final Exam Schedule (depending on date of access, it may be tentative):
https://my.gwu.edu/mod/exam_schedules/default.cfm

Coursicle: <https://www.coursicle.com/gwu>

DegreeMap

This website is here to help you plan your classes for each semester and track your progress in order to graduate on time.

DegreeMap is accessible through GWeb: <https://banweb.gwu.edu>

Sign in, click Student Records and Registration Menu, click Student Records Information Menu and scroll down to see that DegreeMap is the second to last item on the list. Click on DegreeMap, then "Launch DegreeMap."





Student Life

There are many opportunities for you to stay involved on/off campus!

Engage: <https://gwu.campuslabs.com/engage>

General Student Life Info: <https://studentlife.gwu.edu>

Student Life Events Calendar:

https://calendar.gwu.edu/browse?search_api_aggregation_4=student+life

Greek Life: <https://studentlife.gwu.edu/fraternity-and-sorority-life>

Student Organizations: <https://studentlife.gwu.edu/student-organizations>

Student Arts Organizations:

<https://gwu.campuslabs.com/engage/organizations?categories=14054>

Student Association: <https://www.sa.gwu.edu>

GW Trails: <https://studentlife.gwu.edu/trails>

District Connections has free events around DC for first-year students!

<https://studentlife.gwu.edu/district-connections>

Study Abroad

GW offers many study abroad opportunities for GW students. Learn more about the various programs using the resources below!

Study Abroad Office:

Website: <https://studyabroad.gwu.edu>

E-mail: studyabr@gwu.edu

Phone: 202-994-1649

Program Types: <https://studyabroad.gwu.edu/explore-programs>

Global Bachelor's Program:

<https://studyabroad.gwu.edu/global-bachelors-program>

Focus on Fall Abroad Community:

<https://studyabroad.gwu.edu/focus-fall-abroad-community>

Study Abroad Advising

Academic advising is an important part of making study abroad possible.

You should work closely with your faculty and POD advisor to plan your coursework and the timing of your semester abroad.

General: <https://studyabroad.gwu.edu/advising>

Study Abroad Peer Advisors:

<https://studyabroad.gwu.edu/student-workers>

Sustainability

Learn about sustainability efforts at GW and how you can get involved!

Sustainability Homepage:

<https://sustainability.gwu.edu>

Sustainability Student Groups:

<https://sustainability.gwu.edu/student-groups>

Trash, Recycling and Composting at GW

GW has adopted a Zero Waste approach—reducing the amount of waste sent to landfills while increasing recycling, reuse and composting. Although GW faces many significant challenges as an open campus situated in an urban environment, it is working diligently to accomplish the aims laid out in the GW Roadmap to Zero Waste, which was published in fall 2016. In 2021, GW announced its commitment to eliminating single-use plastics from its campuses.

Learn more: <https://sustainability.gwu.edu/waste>

GroW Garden

The GroW Community Garden is a block-length plot of land (located on H Street between 23rd and 24th Streets). It is supported by the George Washington University, and maintained by two student managers (employed by the university) as well as a strong volunteer base. All of the produce is grown to support the work of Miriam's Kitchen, a nonprofit organization that aims to end chronic homelessness in Washington, D.C. Miriam's incorporates fresh, local produce into the meals they serve to their guests Monday through Friday, every week of the year. GroW produce goes right into the kitchens of folks who are housed through Miriam's Permanent Supportive Housing program, which transitions around 135 individuals experiencing homelessness into housing while continuing to provide supportive services.

The GroW Community offers students and community members a space to engage with sustainable agricultural practices, consider issues of food access and food sovereignty in Washington, D.C., and cultivate community around food.

The GroW Community also facilitates a Community Supported Agriculture (CSA) program* that connects students with local farmers and producers to purchase CSA farm shares of fresh, local produce and other food items using GWorld.

Sign up to volunteer!

E-mail: gwgardenmanager@gmail.com

*See Dining for more information.

Transportation in D.C. and GW

Learn your way around the city with a variety of transportation options!

D.C. Transportation

Metro

GW's Foggy Bottom campus is conveniently located by the Foggy Bottom/ GW Metro Station.

If you are headed to the Corcoran's Flagg Building from outside Foggy Bottom, the Farragut West Metro Station is a short walk.

D.C. Metrorail: <https://www.wmata.com/service/rail>

Circulator Bus: <https://www.dccirculator.com>

MetroBus: <https://www.wmata.com/service/bus>

***TIP:** Register your SmarTrip card (good for rail, bus, parking) to schedule auto-reloading and protect your card if it's lost or stolen!*

*Learn more about SmarTrip cards here:
<https://www.wmata.com/fares/smartrip>*

Capital Bikeshare: <https://www.capitalbikeshare.com/how-it-works>

Scooters: <https://www.triphacksdc.com/scooters-in-dc>

Car rides: Uber, Lyft, etc.

Water Taxi: <https://www.wharfdc.com/getting-here/water-taxi>



GW Shuttles

GW Shuttles provides free shuttle service between the Foggy Bottom and Mount Vernon Campuses. Riders may be asked to prove their affiliation with the university by either showing their GWorld to the shuttle driver or on-site supervisor or confirming their affiliation with the university.

Vern Express (VEX)

VEX Map: <https://gw.doublemap.com/map>

VEX Info:

<https://transportation.gwu.edu/mount-vernon-shuttle-vern-express>

Campus SafeRide and GW Rider App

SafeRide provides a free and safe ride to/from Foggy Bottom Campus residence halls and academic buildings during late night hours for students, faculty and staff who prefer to not walk alone.

This SafeRide service **operates seven days a week** during the academic year (except on designated university holidays) **from 8pm until 4am**.

Access this service in three ways:

1. Download the "GW Rider" App, which is available in the Apple or Google Play stores. Log into the app using GW's Single Sign-On (SSO) and request a ride similar to how you request an Uber or Lyft.

2. Log into the website (<https://gw.tapridemobile.com/ride/#/>) using GW's SSO and request a ride.

3. Call 202-994-RIDE (7433) between 8 p.m.-4 a.m.

Learn more about Safe Ride: <https://transportation.gwu.edu/safe-ride>

Washington, D.C.: What to Experience and Where

There are so many different and exciting things to do in Washington, D.C. and surrounding areas. Here are a few ideas!

Concert and Performance Venues

Anthem: <https://theanthemdc.com>

Arena Stage: <https://www.arenastage.org>

Capital One Arena: <https://www.capitalonearena.com>

Ford's Theater: <https://www.fords.org>

Kennedy Center: <https://www.kennedy-center.org>

Landmark's E Street Cinema:
<https://www.landmarktheatres.com/washington-d-c>
\$10 tickets with student ID!

Merriweather Post Pavilion: <https://merriweathermusic.com>

Millennium Stage at the Kennedy Center:
<https://www.kennedy-center.org/whats-on/millennium-stage>
Free performances!

9:30 Club: <https://www.930.com>

The REACH at the Kennedy Center:
<https://www.kennedy-center.org/reach>

Shakespeare Theater: <https://www.shakespearetheatre.org>

Washington Ballet: <https://www.washingtonballet.org>

Professional Sports

Baseball

Washington Nationals: <https://www.mlb.com/nationals>

Nationals Park: <https://www.mlb.com/nationals/ballpark>

Football

Washington Football Team: <https://www.washingtonfootball.com>

FedEx Field: <https://www.washingtonfootball.com/stadium>

Hockey

Capitals: <https://www.nhl.com/capitals>

Capital One Arena: <https://www.capitalonearena.com>

Soccer

DC United: <https://www.dcunited.com>

Audi Field: <https://audifielddc.com>



Museums and Galleries

Artehouse: <https://www.dc.artehouse.com>
Student tickets \$20

National Gallery of Art: <https://www.nga.gov>

National Geographic Museum:
<https://www.nationalgeographic.org/events/visit>
\$9 tickets with student ID!

Stop Motion DC: <https://stopmotiondc.com>

United States Holocaust Museum: <https://www.ushmm.org>

Smithsonian Institution

Air and Space Museum: <https://airandspace.si.edu>

American Art Museum: <https://americanart.si.edu>

The Castle: <https://www.si.edu/museums/smithsonian-institution-building>

National Museum of African American History and Culture:
<https://nmaahc.si.edu>

National Museum of American History: <https://americanhistory.si.edu>

National Museum of Natural History: <http://naturalhistory.si.edu>

National Museum of the American Indian: <https://americanindian.si.edu>

National Museum of Women in the Arts: <https://nmwa.org>

Portrait Gallery: <https://npg.si.edu>

The Renwick Gallery: <https://americanart.si.edu/visit/renwick>



DC Hot Spots

Capitol Building: <https://www.visitthecapitol.gov/plan-visit>

Capitol Riverfront:
<https://washington.org/dc-neighborhoods/capitol-riverfront>

CityCenter DC: <https://www.citycenterdc.com>

Eastern Market: <https://easternmarket-dc.org>

Embassy Row:
<https://freetoursbyfoot.com/washington-dc-tours/embassy-row/#3>

Georgetown Waterfront, shopping and dining:
<https://www.georgetowndc.com>

Library of Congress and Library Card:
<https://www.loc.gov/rr/readerregistration.html>

Monuments:
<https://washington.org/find-dc-listings/monuments-memorials>

Old Town Alexandria, V.A.
It's a short 20-minute car ride from campus, and worth it!
Learn more: <https://www.visitalexandriava.com/old-town-alexandria>

National Zoo: <https://nationalzoo.si.edu>

Union Market: <https://unionmarketdc.com>

U.S. National Arboretum: <https://www.usna.usda.gov>

U.S. Botanic Gardens: <https://www.usbg.gov>

Washington National Cathedral: <https://cathedral.org>

The Wharf: <https://www.wharfdc.com>

The Yards: <https://www.theyardsdc.com>





CORCORAN

SCHOOL OF THE ARTS AND DESIGN
UNDERGRADUATE PROGRAMS

Dedicated to Art